

September 2017

Dear Genesee Elementary Families,

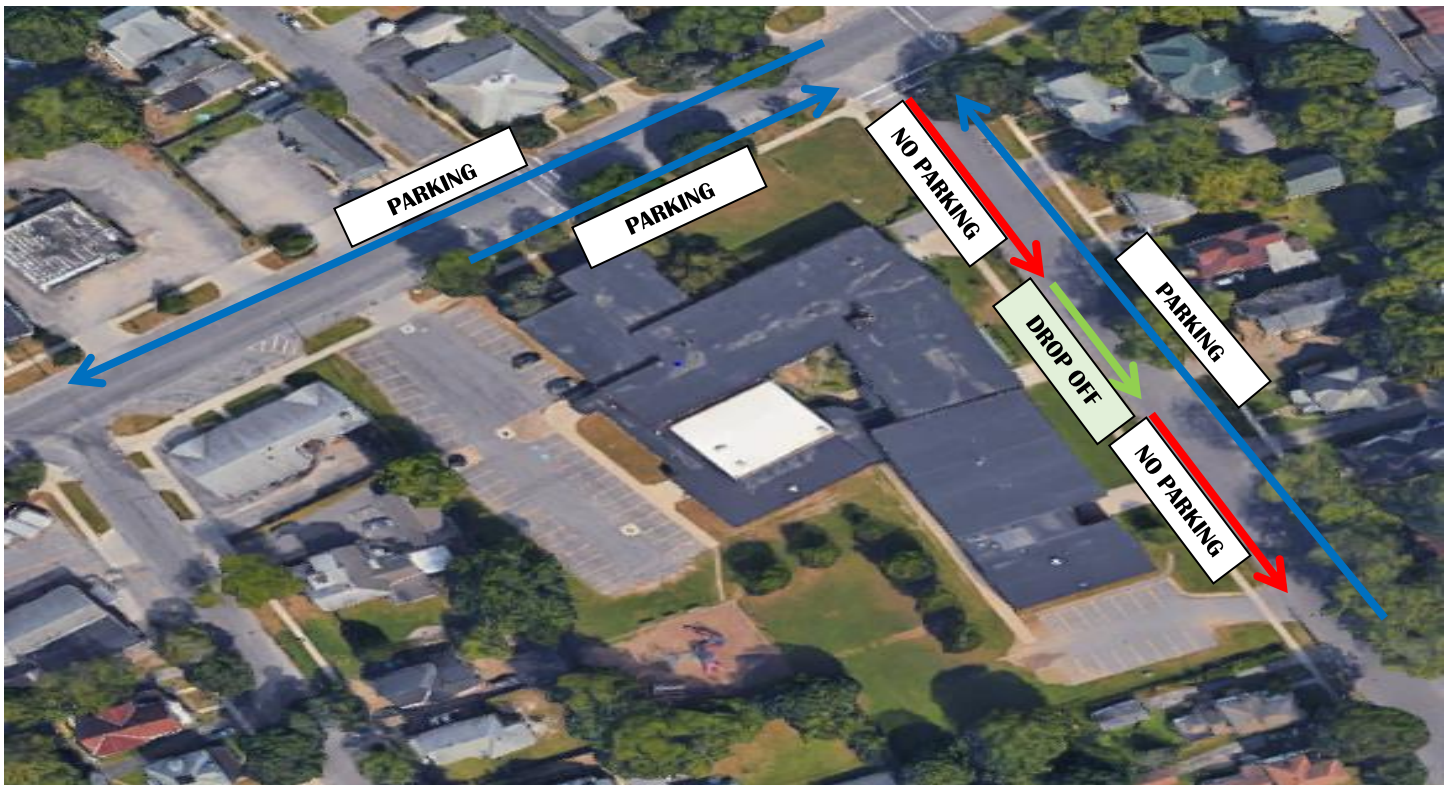
Effective on the first day of school, a new traffic pattern is in effect for Genesee Elementary School. This traffic pattern was put in place for the safety of each and every one of our students. To keep students safe, we ask that you pay close attention to the new signage and road paintings surrounding the school.

**Arrival to school:**

- Students are to arrive between 8:30am and 8:45am, and will enter the building at their grade level's door.
- Students will not be permitted in the building prior to 8:30am, so please plan accordingly.
- Once the late bell has rung at 8:45am, all students must enter through the front office doors.
- Car drop-offs (no parking) must take place in the designated area on Garrow Street.
- If you wish to park and walk your child to his/her designated door, you are allowed to do so on both sides of Genesee Street from the school parking lot to the corner of Garrow Street, and on the east side of Garrow Street.

**Dismissal from school:**

- Kindergarten students will exit through the last door facing Garrow Street at 2:50pm.
- All other students will be dismissed through their designated doors at 3:00pm.
- Afternoon parking and pick-up rules remain the same as morning drop-off rules.



We greatly appreciate your support and cooperation in promoting the safety of every Genesee Elementary student!

Sincerely,  
Amanda Simmons