

Reopening Auburn Junior High School

Community Update

Auburn ECSD - Phase-in Reopening Plan

Phase-in reopening schedule:

Sept. 8 & 9: Introductory Days

These days will be reserved for students on both the hybrid and remote learning models to come in and pick up equipment and meet their teachers during scheduled times to be determined and shared at a later date.

Sept. 10 – 25: Phase 1

Students in 8:1:1 and 12:1:1 programs will attend school on an A/B schedule. Additionally, students in, Compass, and day treatment programs will attend school according to their specific program's schedule. All other students will participate in the full remote learning model.

Auburn ECSD - Phase-in Reopening Plan

Phase-in reopening schedule continued:

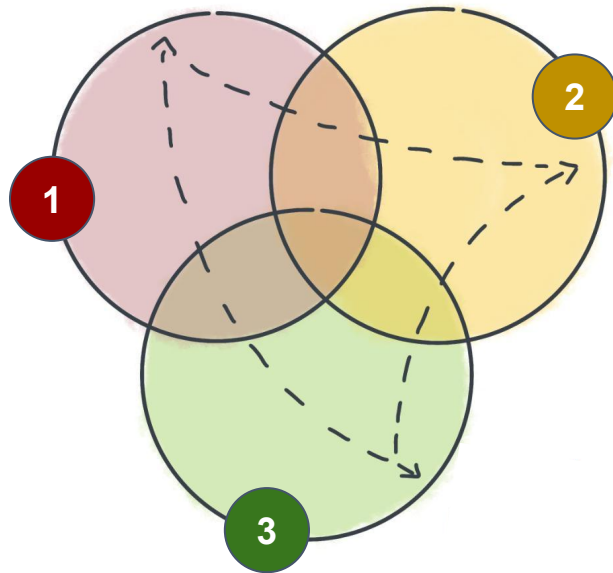
Sept. 28: Phase 2

Grade 7 will attend school following the hybrid model. 7th Grade Orientation activities will take place during the first days of in-person learning days. Grades 8 will continue with the full remote learning model.

Oct. 13: Phase 3

All other students who have opted into the hybrid learning model will attend school.

Reopening Scenarios



~~Scenario 1: 100% of our students are in buildings for instruction with safety precautions.~~

Scenario 2: Hybrid model where some students are learning at home and some are in learning on-campus in our buildings.

Scenario 3: 100% distance learning model where all students are learning off campus at home.

If you choose the...

Hybrid Schedule:

- Two Groups
- Group #1- Students with last names that begin with the letters A-L will attend school in-person on Monday and Wednesday.
- Group #2- Students with last names that begin with the letters M-Z will attend school in-person on Tuesday and Thursday.
- When students are not in school they will have assignments to complete independently with teacher support.

100% Remote Schedule:

- Students will complete assignments from home through Google Classroom. Assignments will be adjusted in order to get through the curriculum and lack of in-person instruction.
- Parents who have requested a full remote learning model of instruction for their child(ren) will be able to request a transfer to the hybrid learning model once they feel comfortable with the health and safety guidelines the district has in place or if they feel the full remote learning model is not working for them.

Module Sections



**Communication/
Family & Community
Engagement**



Health and Safety



Facilities



Child Nutrition



Transportation



**Social Emotional
Well-Being**



School Schedules



**Attendance and
Chronic Absenteeism**



**Technology and
Connectivity**



**Teaching and
Learning**



Special Education



**Bilingual Education
and World Languages**



**Teacher and Principal
Evaluation System**



**Certification,
Incidental Teaching,
and Substitute
Teaching**

Reopening Guiding Principles



Safety



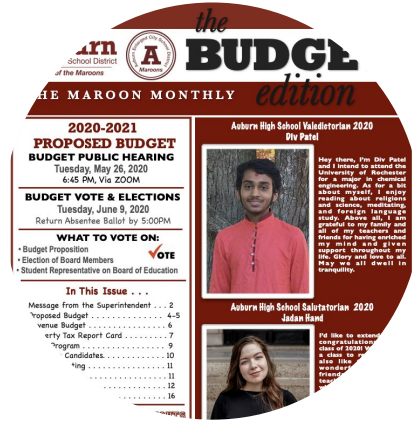
Equity



High Quality Instruction



Accountability



Communication

Reopening Guiding Principles: SAFETY

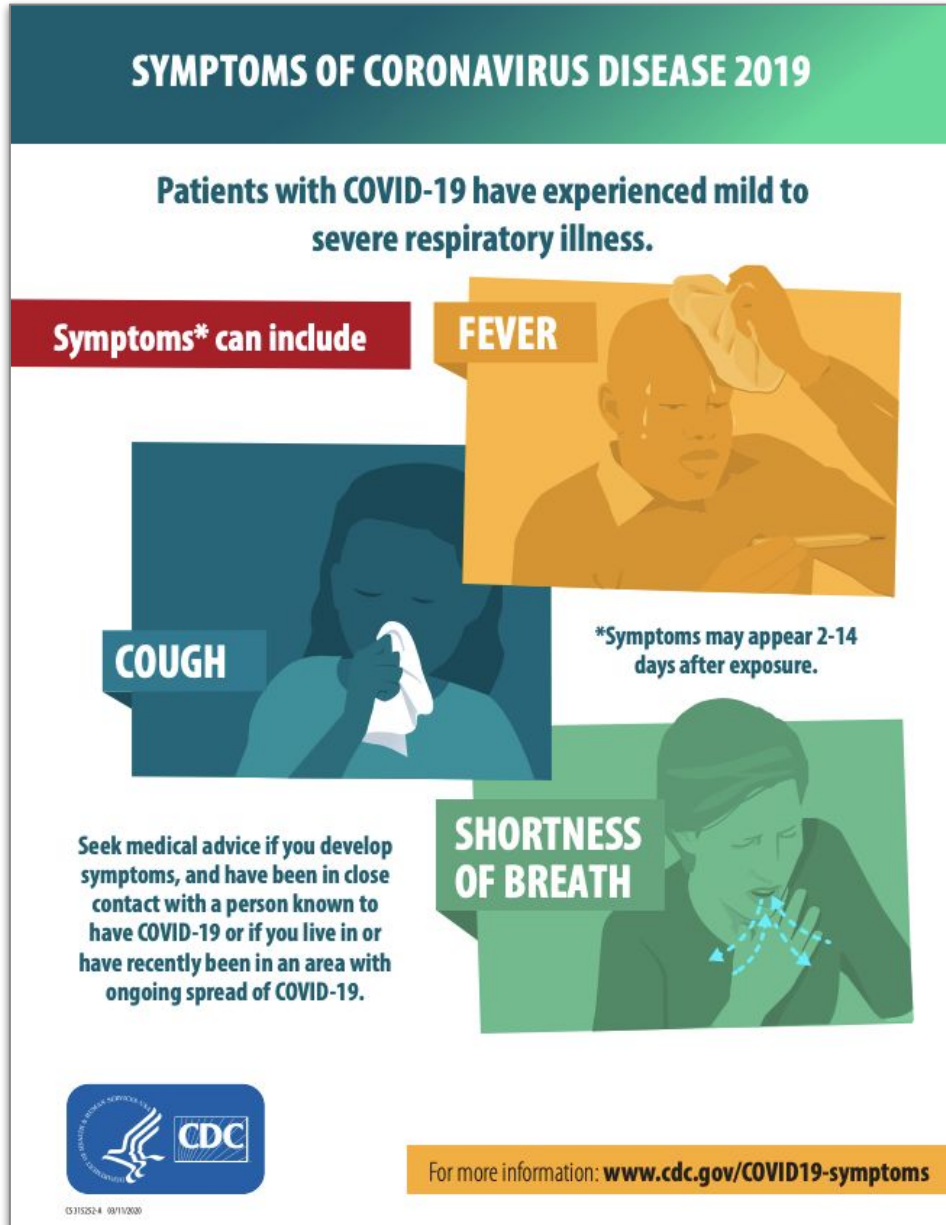


- Transportation
- Arrival procedures
- Symptoms
- Face Coverings
- Social Distancing
- Deep Cleaning



TRANSPORTATION:

- Students will be required to wear a face covering when boarding, riding, and exiting the bus unless there is a documented medical condition allowing for an exception.
- Children living in the same household will be seated together.
- Students will remain seated throughout the duration of the bus ride.
- School buses will be thoroughly sanitized.
- Students that are eligible for transportation will receive a bus pass within the next couple of weeks.



COVID-19 Symptoms

- Fever
- Cough
- Shortness of breath or difficulty breathing
- Chills or repeated shaking with chills
- Muscle pain
- Headache
- Sore throat
- Unidentified rash
- Congestion or runny nose
- Nausea, vomiting, or diarrhea
- New loss of taste or smell

Health and Safety

- The following procedures will be followed when students or staff show symptoms of COVID-19:
 - ❖ Students showing COVID-19 symptoms at school will be taken to an isolation room; parents will be notified immediately.
 - ❖ The area will be reopened after it has been sanitized.
 - ❖ Students will engage in virtual learning while they stay at home due to illness.
 - ❖ The district will notify health officials, staff and families of possible cases while maintaining confidentiality as required by NYS regulations.



Face Coverings

- All students and staff will be expected to wear face masks at all times during the day.
- Teachers will be providing mask breaks throughout the day, as needed, when students are socially distanced.
- Students will be expected to maintain social distancing when in the classroom.
- Desks and furniture have been relocated within classrooms in order to accommodate this.

Reopening Guiding Principles: EQUITY

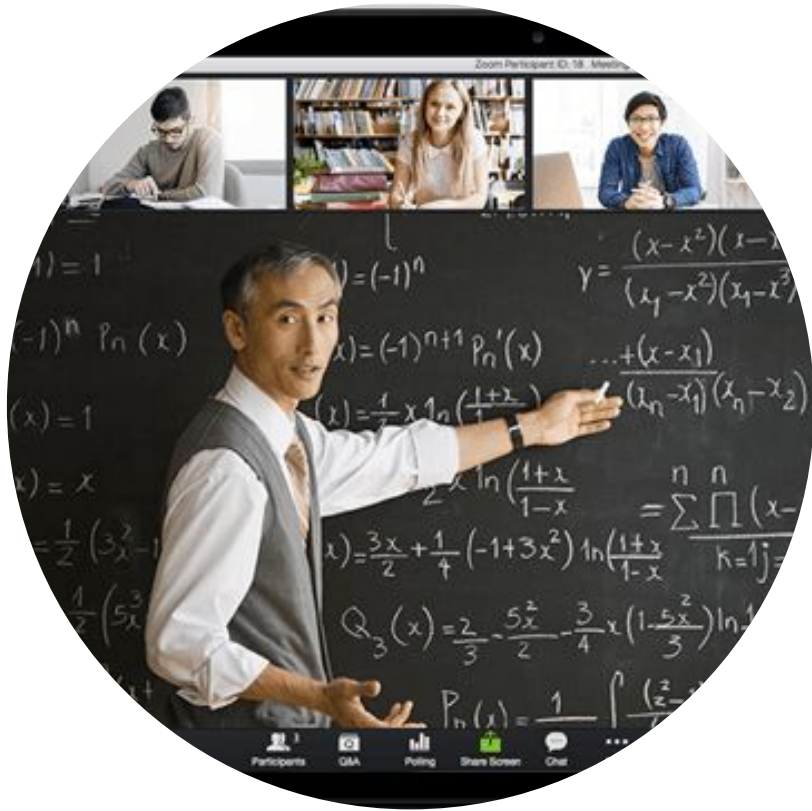


- Technology

- Access to technology will be based on a family's need. Students will be able to pick up requested technology devices on Sept. 8 and 9. Further communication from the technology department will be forthcoming.

- Related services - teletherapy
- Fluid scheduling
- Teacher office hours
- Small group instruction
- Individual check-ins

Reopening Guiding Principles: HIGH QUALITY INSTRUCTION



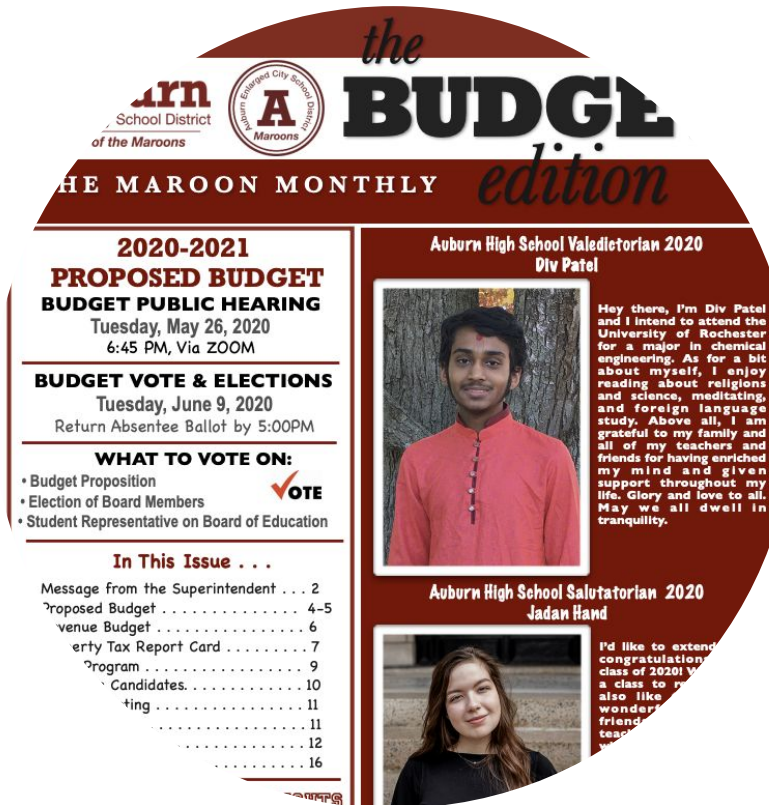
- Google Classroom platform
- New learning daily
- Instructional videos
- Supporting materials
- Small group instruction
- Individual student check in
- Special areas

Reopening Guiding Principles: ACCOUNTABILITY



- Monitored daily attendance
- Assignment completion
- Regular student participation
- Students ready to learn
- Ongoing communication with teachers

Reopening Guiding Principles: COMMUNICATION



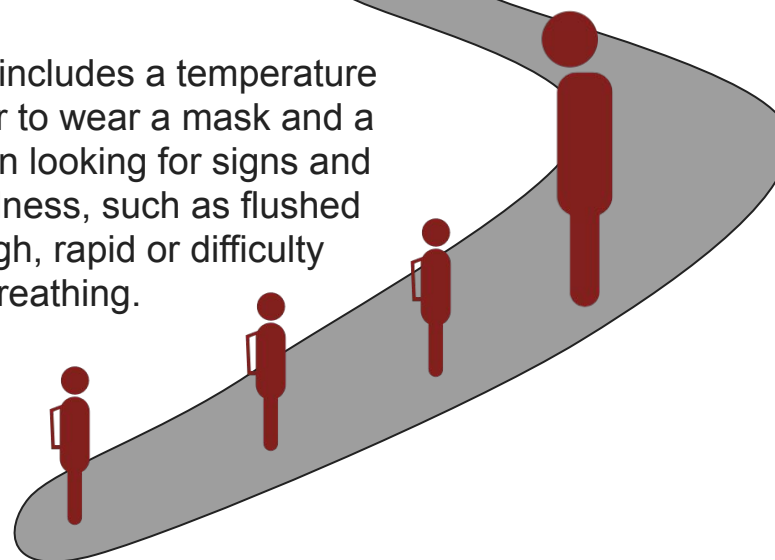
- Teacher Communication
- Newsletters, emails, phone calls, social media
- Continual updates
- Teacher assignments and due dates posted weekly
- Access to services
 - counselors, psychologists, social workers



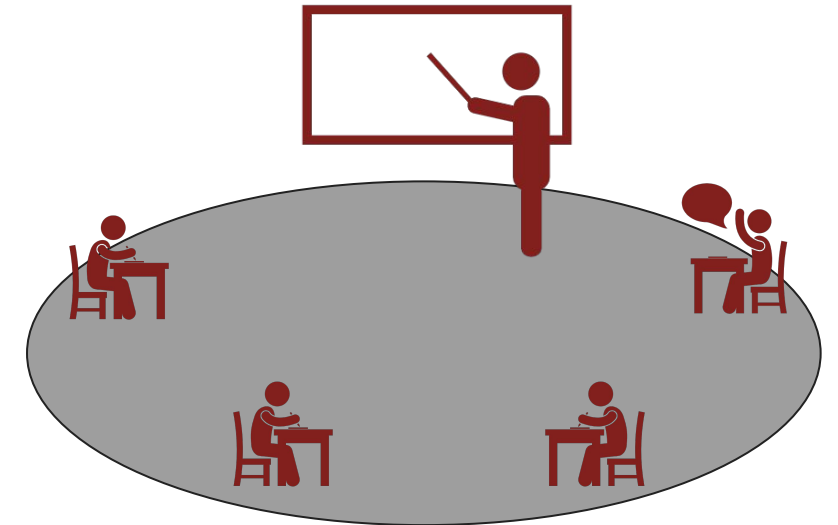
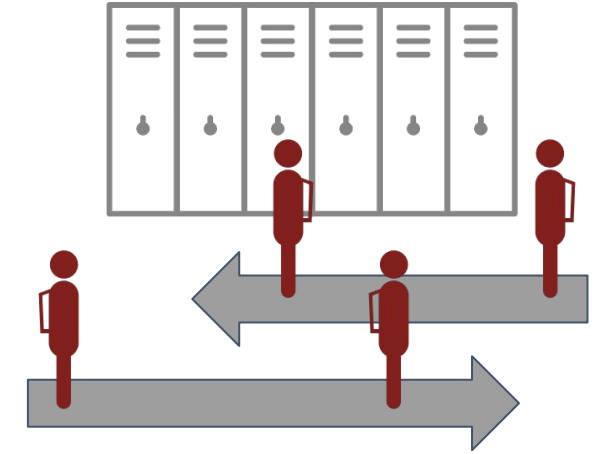
Students wear a mask and take their assigned seat on the bus to school.



Arrival protocol includes a temperature check, reminder to wear a mask and a visual inspection looking for signs and symptoms of illness, such as flushed cheeks, cough, rapid or difficulty breathing.



Students follow floor markers to maintain social distancing in hallways and classrooms



Student desks in class will be arranged to ensure social distancing.

Student Arrival

- Students must maintain social distancing and wear masks when outside waiting for the doors to open.
- Cafeteria will open at 7:20. The entrance closest to the college will be designated for students attending breakfast.
- All other doors will open at 7:35 with Temperature Check Stations at those locations.
- Students will immediately report to their 1st period class. Lockers will not be used.

Student Schedule for In-Person

- 9 period Bell Schedule
- Students will be taking all of the classes that requested just as any other typical year.
- 39 minute classes. 4 minutes allotted for passing time.
- Students will have individual desks to sit at during lunch. Students must wear their mask when not at the desk.
- All other doors will open at 7:35 with Temperature Check Stations at those locations.

Dismissal

- Students will be dismissed at 2:17
- Students that are want the following days breakfast and lunch may pick them up in the cafeteria at this time.
- Teachers will be available for extra help until 2:50. However parents are responsible for transportation if their child stays.
- All students that are not staying for extra help must immediately board their bus, ride or walk home.