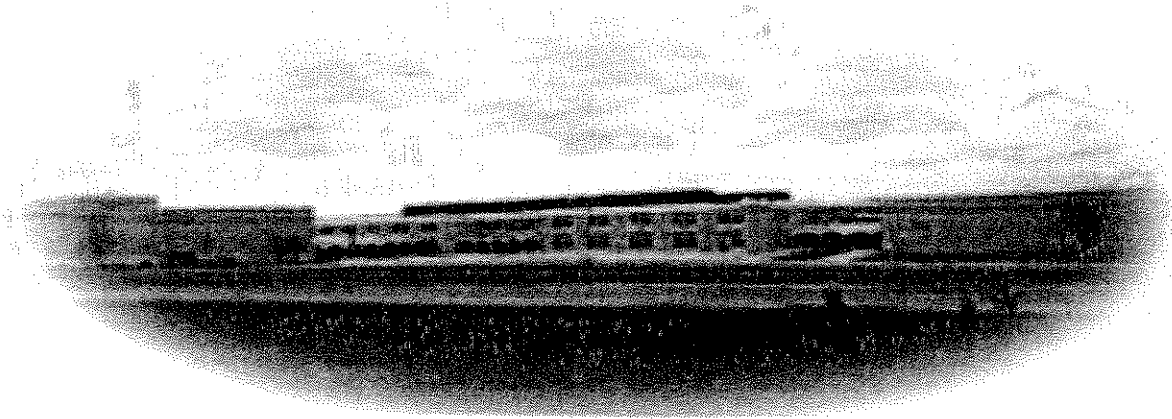


# COLLEGE SEARCH AND CAREER READINESS GUIDE



**AUBURN HIGH SCHOOL**

CEEB CODE: 330-240

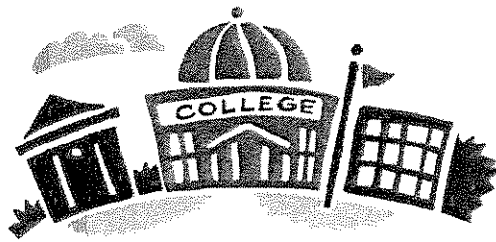
*AHS COUNSELING DEPARTMENT*

Graduation Requirements for Students entering Grade 9 in 2007 and thereafter  
Regents or Local Diploma

<u>Areas of Study</u>	<u># of Credits</u>	<u>Specific Requirements</u>
English	4 Units	English 9, 10, 11 and a total of 1 unit selected from required senior courses. 65 on English Regents Exam
Social Studies	4 Units	2 units of Global History and a score of 65 on the Global History Regents exam. 1 unit of US History and Govt. and a score of 65 on the US History Regents. ½ unit of Government and ½ unit of Economics.
Math	3 Units	65 on the Integrated Algebra Regents
Science	3 Units	1 unit of Life Science minimum 1 unit of Physical Science minimum 65 on a Science Regents exam
Health	½ Unit	In accordance with State standards
Languages other than English	1 Unit	
Art and/or Music	1 Unit	
Physical Education	2 Units	Must take each semester
Additional units of credit to total 22 credits		

**Additional Requirements for Regents Diploma with Advanced Designation**

- Students must pass the three Regents exams titled Integrated Algebra, Geometry & Algebra 2/Trigonometry.
- One additional Regents exam in science, for a total of two Regents exams, with at least one in life science and at least one in physical science
- Two additional units in a language other than English for a total of three units in a single language, and the culminating exam in that language. Note: Students can bypass this language requirement by earning a 5 unit sequence in Technology, Business or Fine Arts.



## Table of Contents

Introduction letter.....	1
The College Search and Application Process: What you should know.....	2-3
Senior/Junior Student Responsibilities.....	4-5
College Planning Checklist.....	6-9
Explanation of Forms.....	10
College Application Checklist.....	11
Non-Faculty Recommendation Form.....	12
Parent Evaluations.....	13
Scholarship Application Checklist.....	14
Deadline To Turn In College/Scholarship Applications.....	15
College Admissions Testing Terms.....	16
About Admission Tests.....	17
The ACT Test.....	18
Test Registration and Score Reporting.....	19
Let's Compare the ACT and SAT Reasoning Tests.....	20
Helpful Hints in Choosing a College.....	21-22
Organizing Your Research Tips.....	23
School Interview Checklist.....	24
Campus Visit Checklist .....	25

College Comparison Chart.....	26
The Application Process.....	27
Writing a Successful College/Scholarship Essay.....	28
Getting Recommendations.....	29
Sample Extracurricular Activity Sheet.....	30
Student Questions for Recommendation Letters.....	31
How Do Colleges Evaluate Applicants?.....	32
Post Secondary Education.....	33
Financial Aid Terms.....	34
Types of Degrees.....	35
Your Career Connection – Careers Related to Academic Subject Areas.....	36
NCAA Information.....	37-39
United States Military Academies/ROTC/Enlistment.....	40-41
Frequently Asked Questions.....	42-43
Helpful Resources.....	44
Admissions Information Summaries/Division Sports Information.....	45-47

***\*The information in this booklet has been acquired from multiple Internet resources and informational handouts from a variety of educational institutions.***



# Auburn High School Counseling Department

Auburn High School, 250 Lake Avenue, Auburn, NY 13021

Dear Student:

Welcome to the college search and application process. Your goal is to choose an institution of higher education that you will attend after high school. This process can seem daunting, but we are hoping with the aid of this informational booklet, your family and the counseling staff at AHS, you will find the support available to make this process both manageable and enjoyable.

In this booklet you will find checklists, timelines, tips, organizational tools and answers to frequently asked questions regarding college admission, scholarships and financial aid. Because of the wealth of information available on each of these topics, at times we will refer you to other supporting material found in the counseling office.

Your job is to discuss with your family what is possible regarding college choices and financing your education. You will also need to examine your individual needs, research possible colleges to meet those needs and to learn of the specific admissions requirements for each of your potential schools. Our job as your school counselors is to assist you with the various steps and questions you may have during this process and to send your academic information to the colleges of your choice.

Once you have determined the colleges you will be applying to, you will need to fill out a college application checklist (see page 16) for each college and return them to your school counselor. This form is our way of communicating with each other regarding what you have already done and what you still need for each individual application. PLEASE PROVIDE YOUR COUNSELOR WITH THE COURTESY OF 10 WORKING DAYS TO COMPLETE THEIR PORTION OF EACH APPLICATION. We cannot guarantee that we can meet your deadline with less than 10 days, due to the volume of applications that we may be processing at any given time. We appreciate your understanding and cooperation in this matter.

Please do not hesitate to consult with us regarding any aspect of the college planning process. We will be happy to assist you in any way that we can.

Sincerely,

COUNSELING DEPARTMENT

Mr. Crosby	A-Ci	255-8314	Mr. Walker	K-M	255-8318
Dr. Hoskins-Tardibone	Cl-Gra	255-8317	Mrs. Stryker	N-Sk	255-8311
Mrs. Michele Kmiecjak	Gre-J	255-8315	Ms. Shurant	Sl-Z	255-8321

Annie Hoff - Counseling Secretary - 255-8338



# The College Search and Application Process: What You Should Know

## **Can I Really Go To College?**

Yes! Anyone with the desire to learn and work hard can go to college. There are many financial aid options and programs to help cover costs, and colleges have varying academic admissions requirements. So if going to college is your goal, start working toward it now!

## **Academics and High School Course Selection**

Colleges and universities want to see that students challenged themselves in high school and took rigorous courses whenever possible. Students planning on attending a four-year college should plan on taking at least 3-4 units of math, 3-4 units of science, and 3-4 units of foreign language. If you have the ability to take enriched, college-level or AP courses, you should do so; just don't take on more than you can handle successfully. How well you do in the course makes a difference. The strength of your transcript is based on types of courses, final grades and exam grades and is a key piece in the college admission process.

## **College Credits Earned in High School**

If you took CCC, SUPA or Project Lead the Way (RIT) courses in high school, you must have a separate transcript showing those completed college courses sent from CCC, Syracuse University, or RIT to the college you will be attending. If you took AP courses, you will need to have the College Board send your AP Score Report to your college of choice.

## **The Importance of SAT, SAT II, and ACT Scores**

Nearly all four-year colleges and universities require SAT or ACT scores for admission. Most college admissions representatives recommend that students take the SATs *and* ACTs in the spring of their junior year, and again in the fall of senior year. This gives the student the best chance for a strong score. SAT Prep courses are available through Cayuga Community College in the fall and early spring each year. Some universities may require SAT II subject tests for admission or for specific majors. Check directly with the university to find out if you need them.

## **Searching For the Right College**

Take the time to do your research! Sit down with your parents/guardians and decide what type of college environment and activities you are looking for: large, small, urban, rural, Christian, public, private, ROTC, Division I soccer, etc... Then find out which colleges have your intended major *and* the characteristics you'd like. Utilize the college search programs in Naviance and at [www.collegeboard.com](http://www.collegeboard.com). Your school counselor can help you with this! Be sure you and your parents agree on which colleges are viable options for your family financially. Finally, visit, visit, VISIT!

## **Dealing with Deadlines**

Deadlines are crucial for the college admissions process. Be sure you know exactly what each college's deadlines are for early decision/early action, regular admission, and financial aid. Also, certain majors (i.e. nursing) may have a different deadline than the main college. Plan to have all application materials completed at least *two weeks* prior to a deadline, as rushing at the last minute may lead to errors and does not give your counselor time to complete his or her portion. Make sure to tell your recommendation writers about your deadlines as well.

## **The College Essay**

The essay is perhaps the best way to let college admissions representations get to know you on a more personal level. Choose an essay topic that you are passionate about, that lets the reader know about your dreams and aspirations, your personal strengths and struggles, and what makes you the person that you are. Make absolutely sure that your essay is free of any grammatical, punctuation or spelling errors; DO NOT rely on spell-check for this! All seniors will complete a college essay assignment in English class, so have your teacher help you fine-tune your essay before you submit it.

## **Recommendation Letters**

Most colleges require at least one teacher recommendation and one counselor recommendation; be sure you know the requirements of each college to which you are applying. Ask teachers *in person* that you've preferably had within the last year or two and who know you well. The person should be able to comment on your character and strengths as well as your academics. You may also be able to submit letters from coaches, clergy, or employers. Finally, make sure that your school counselor has gotten to know you well enough to write a comprehensive recommendation...don't be a stranger!

## **Campus Visits and Interviews**

As stated earlier, campus visits are key in making your college choice. Visiting a campus gives you the chance to see what the day-to-day college experience is really like. Will you like the dorms, the food, the social atmosphere, the academic opportunities, and the extracurricular activities? Do you feel comfortable there? Take every opportunity to attend campus open houses or tours for the best visit experience.

If the college offers interviews, consider taking advantage of that opportunity. If an admissions representative can meet with you one-on-one to ask and answer questions, this may work in your favor at decision time. Be sure to dress, act and speak appropriately...first impressions carry a lot of weight. Afterwards, send a note to the interviewer(s) thanking them for their time.

## **The Importance of Community Service and Leadership**

College representatives will of course look at your academic record, but they are also looking for students who enriched their high school experience through community service, leadership and extracurricular activities. They want students who will be successful both in and out of the classroom, and who will be a positive addition to their campus community. This is why we stress to 9<sup>th</sup> graders to get involved! Long-term commitment to a few activities is generally better than working an hour here and an hour there at a number of different things. Talk to your school counselor about how to build your résumé!

## **What Colleges Are Seeking in Students**

Remember that colleges and universities are businesses, and that their reputation is heavily influenced by the success and behavior of their student body. Many colleges even look at applicants' Facebook pages to see if the content is appropriate or not. That said, colleges are looking for students who are mature, hard-working, active in campus life and of strong character. Consider this: future employers are looking for the same characteristics!

## **Admission for Athletes**

Although athletes may initially work with a college coach during the recruiting process, it is important to realize that athletes must still meet academic standards for admission and follow the same admissions process. If you plan to play a NCAA Division I or II sport in college, you must work with your high school counselor to be sure you meet NCAA eligibility requirements.

## **HEOP/EOP Program Requirements**

Generally speaking, HEOP and EOP are programs designed to help students who do not meet academic standards for admission but show strong potential for college work, *and* meet the income guidelines indicating financial need. If you believe you would be eligible for such a program, see your school counselor or contact college admissions offices directly for more information.

## **Setting Your Application Above the Rest**

Follow the steps above! Give the admissions representatives every opportunity to get to know you beyond what is on paper. Write a strong college essay. Follow each college's admission requirements to the letter. Meet your deadlines!



## *Mandatory Senior Student Responsibilities*

**Naviance:** Be sure to activate your Naviance account for both you and your parents.

The majority of college applications will be submitted electronically through Naviance. Scholarship lists, college search, career info, and important informational emails are also available through Naviance. Please consult with your school counselor **before** completing and submitting your applications.

You must verify that your application, once submitted, has reached its destination successfully. Check your college's application status checker as well.

**Activity Sheets:** It is **required** that you submit a typed activity sheet to your school counselor for the application and scholarship processes, regardless of where you are applying.

**Deadlines:** Consult with your school counselor regarding important application procedures and deadlines.

It is **extremely important** to give teachers and counselors adequate time to complete their portion of your application, e.g. **no less than 3 weeks**.

When asking for letters of recommendation, it is expected that you ask the recommender personally **no later than October 31<sup>st</sup>**.

**SATs and ACTs:** Register no later than late August for the October and November administrations of the SATs and ACTs.

The college testing companies now allow students to choose which scores to send to colleges via the Internet. If, however, you choose to have your school counselor send your scores, please know that **ALL** scores will be sent.

### **College Application Checklists:**

This checklist **MUST** be accurately completed for **EACH** college application you submit. Give the checklist to your school counselor as soon as you have applied. It is your responsibility to tell us what must be sent to each college.

**Student Athletes:** If you have plans to play NCAA Division 1 or 2 athletics, see your school counselor to ensure that you have the correct courses for eligibility prior to the start of your senior year. It is best to begin planning before junior year, as eligibility requirements have become more rigorous.

Have your SAT and ACT scores sent directly from the college testing companies to the NCAA Clearinghouse.

### **Junior Student Responsibilities**

**SATs and ACTs:** Take the SATs and ACTs, and if applicable, SAT II tests during junior year. Plan to retake one or more of them in fall of senior year.

**Student Athletes:** If you have plans to play NCAA Division 1 or 2 athletics, see your school counselor to ensure that you have the correct courses for eligibility prior to the start of your junior year.

**Activity Sheet:** Develop and update your activity sheet through the Naviance program.

**Scholarships:** Some colleges offer scholarship and award opportunities to eleventh grade students who meet certain criteria set by the college. Explore junior scholarship opportunities in Naviance. Information on how to apply for these scholarships/awards will be sent out in January.

**College Search:** Research potential colleges, find out what they require for admission, and visit, visit, visit! Attend open houses when possible to get the most information.

Compile a list of colleges to which you'd like to apply, and be ready to share that list with your school counselor upon entering senior year.

**Academics:** Do the absolute best you can in your junior year courses, as they are your last chance to boost your GPA and class rank, as well as the strength of your transcript for college admission.

# COLLEGE PLANNING CHECKLIST

## SENIORS

### August-September

- Open a student Naviance account if not already done ([www.connection.naviance.com/auburnhs](http://www.connection.naviance.com/auburnhs))
- Ask parent to open a Naviance account if they wish to receive college information and emails from the Counseling Office.
- Discuss college planning with family.
- Discuss with parents/guardians how college will be financed.
- Explore occupational choices.
- Explore & choose a major (or go undecided)
- Discuss course load and college plans with school counselor.
- Maintain regular communication with your school counselor throughout this process.
- Use college search engine to assist with search process, if necessary.
- Organize college information and keep track of important deadlines.
- Learn the admissions requirements for each school you are applying to.
- Be sure to include a safety school or two that you would like to attend.
- Register for SAT/ACT or SAT II, if necessary.
- Visit the college representatives in the fall at Auburn High School.
- Take advantage of college/scholarship essay assignment in English class.
- Arrange campus visit individually or attend a fall "Open House".
- Enter college choices in Naviance and indicate if you are using the Common Application to apply.
- Sign FERPA waiver in Naviance
- Check deadline for applications
- Check requirements needed for applying to college and any special program (ie: auditions, portfolios, nursing)
- Conduct a scholarship search.
- Submit a CSS Profile financial aid form, if needed.
- Student athletes apply to the NCAA Clearinghouse and inform their school counselor if not completed already.
- Student athletes send SAT/ACT scores directly from the testing service to the NCAA Clearinghouse.
- Attend College Kick-Off in August at AHS.

### October

- Review transcripts and planning process with school counselor.
- Ask for letters of recommendation to include in college and scholarship applications.
- Inform school counselor and recommenders of your deadlines (especially early action/early decision).
- Attend college fairs.
- Find out which financial aid forms are required for each college.
- Work on college applications.
- Determine the best way to apply to college (college-specific application or Common Application).
- Early Decision candidates should complete college application and notify school counselor by turning in the college application checklist with the application (or just the checklist if submitted online).
- Search for scholarship opportunities at colleges.
- Ensure that your electronic application has been sent (CHECK STATUS!).
- Check your email regularly for correspondence from colleges you applied to and respond in a timely manner.
- Read senior newsletter and emails from Naviance for important information.

### November

- Remain organized.
- Continue to complete college applications.
- Complete a checklist for each application and turn in to your counselor.
- "Early Decision" deadline is often Nov. 1<sup>st</sup> or 15<sup>th</sup>.
- Review the local scholarship list on Naviance.
- Read senior newsletter and emails from Naviance for important information.

### December

- Complete college applications by Dec. 1<sup>st</sup> (ideally).
- Collect tax information for financial aid forms.
- File for PIN number to complete FAFSA online.
- Take final SAT/ACT or SAT II, if necessary.
- Discuss EOP/HEOP information.
- Read senior newsletter and emails from Naviance for important information.

### January

- Submit your FAFSA as soon as possible after January 1<sup>st</sup>. Some funding from student aid programs are first come, first serve. Therefore, funds can become depleted if you wait.
- Fill out and submit required financial aid forms for each college (this can vary from school to school).
- Begin applying for local scholarships.
- Attend county-wide financial aid event at CCC.
- Read senior newsletter and emails from Naviance for important information.

### February-March

- Students begin to receive college acceptance notices.
- Continue to apply for local scholarships.
- Be looking for your Student Aid Report (SAR) in the mail and review results for accuracy. (Mistakes on this report could impact funding.)
- Students begin to receive financial award letters.
- Read senior newsletter and emails from Naviance for important information.

### April

- April 1<sup>st</sup> is the deadline for many of the local scholarships.
- Carefully review information sent from colleges.
- Make a decision on a college. Most request a reply by May 1<sup>st</sup> with a tuition deposit.
- Notify the colleges you will not be attending.
- Note important college deadlines (e.g., housing, financial aid, meal plans).
- Read senior newsletter and emails from Naviance for important information.

### May

- Meet the May 1<sup>st</sup> decision deadline for college acceptance.
- Return necessary forms and respond quickly to requests from colleges.
- Notify the financial aid office of additional funding you have received for college (scholarships and loans).
- Learn about and evaluate student loan lenders, if necessary.
- Fill out mandatory senior survey and return to counseling office. (This informs your counselor of your final decision so end-of-year transcripts can be sent.)
- Read senior newsletter and emails from Naviance for important information.

### June

- Complete all academic requirements needed for graduation.
- Review college web site for recommended packing list and new student tips.
- Attend college orientation.

# JUNIORS

## September

- Plan a family college discussion.
- Open a student Naviance account if not already done ([www.connection.naviance.com/auburnhs](http://www.connection.naviance.com/auburnhs))
- Ask parent to open a Naviance account if they wish to receive college information and emails from the Counseling Office.
- Prepare a list of questions to ask college reps.
- Get and stay organized.
- Create files to keep applications and correspondence.
- Set up a calendar of important dates and deadlines.
- Review your courses with your counselor. Athletes planning for NCAA Division I or 2 eligibility should check their courses carefully.
- Collect college catalogs.

## October-November

- Attend college fairs and financial aid nights.
- Learn the basics about federal and private loans.
- Search for scholarships and financial aid.
- Plan and make college visits.

## December

- Talk with college friends home on break.
- Take both the SAT and ACT at least once.

## January

- Identify characteristics you want in a college.
- Attend college fairs and financial aid nights.

## February

- Search for scholarships
- Register and study for the SAT and/or ACT.

## March

- Plan campus visits.
- Discuss ways to pay with each college on your visit.
- Keep up family college discussions.
- Narrow your college search to a reasonable number.
- Estimate how much each college will cost.

## April-May

- Compare college requirements to your course load.
- Visit colleges.
- Take the SAT and/or ACT.
- Meet with your counselor and select senior year courses.

## June-July-August

- Call colleges and arrange for summer visits.
- Improve your reading and vocabulary skills.
- Combine vacation plans with college visits.
- Talk to people in careers you find interesting.
- Talk with college friends home for the summer.
- Review and edit your list of colleges.
- Search for scholarships and ways to pay.
- Start working on your college application.
- Decide who you'll ask to write recommendations.
- Attend College Kick-Off event in late August at Auburn High School.

## Freshmen & Sophomores

- Get to know your high school counselor.
- Develop good study skills.
- Explore careers you find interesting.
- Evaluate your personality, interests, and skills.
- Take challenging courses.
- Participate in extracurricular activities.
- Start to understand the college planning process.
- Sophomores take the PSAT in October.
- Athletes, plan courses around potential NCAA eligibility needs.

## Transcript

If you believe there are errors on your transcript, consult with your school counselor. Your grade point average (GPA) and rank in class are determined by your three-year average. This is the only rank you will receive. (There will be no re-ranking during the senior year.)

## Requirements for Graduation

This list is for your information and review. Your counselor has been monitoring your academic progress and will tell you what requirements you must complete for your diploma.

Teacher Recommendation List - Please return this to your counselor.

## Common Application Faculty Recommendation Forms

Send your recommendation requests to teachers through Naviance after you have asked them in person. Typically a total of 3 is sufficient. If you are unsure about whom to ask for a recommendation, ask your school counselor for assistance. Teachers will have access to the necessary form on Naviance.

## Non-Faculty Recommendation Form

If you know a person (i.e., employer, someone for whom you did volunteer work, etc.) who could provide meaningful information to college admission persons or prospective employers, have him/her complete this form and mail it to your counselor. Be sure to provide this person with a school addressed, stamped envelope.

This form can be found in this packet and in the Counseling Office.

## Parent Evaluation Form

Have your parents complete this form if they can provide pertinent information that cannot be found elsewhere.

## Sample Extracurricular Activity Sheet

The sample activity sheet is one way you might prepare your own activity sheet. Use it as a guide. Your activity sheet should be a list of your activities and should not be in paragraph form. It should be typed and turned into your counselor so copies can be made and included with each of your applications. It would be helpful to give a copy to any person writing a recommendation for you.

## College Application Checklist Form

Three forms are included in this packet. See your counselor for additional copies or feel free to make copies on your own. You need to submit one form to your counselor for each application.

# College Application Checklist

You **MUST** include a copy of this form with **EACH** college application you submit to your counselor.

To **GUARANTEE THE MEETING OF YOUR DEADLINE**, your counselor **MUST** receive your **COMPLETED APPLICATION** at least **15 WORKING DAYS PRIOR TO THE APPLICATION DEADLINE**.

Student Name: \_\_\_\_\_ Date: \_\_\_\_\_

Counselor Name: \_\_\_\_\_

College to which you are applying: \_\_\_\_\_

## Admission Type/Deadlines:

\_\_\_\_ Early Action/Notification      Deadline Date: \_\_\_\_\_  
\_\_\_\_ Early Decision      Deadline Date: \_\_\_\_\_  
\_\_\_\_ Regular Admission      Deadline Date: \_\_\_\_\_  
\_\_\_\_ Rolling Admission

Application Fee: Amount: \_\_\_\_\_ Payment Method (circle): credit card/check/money order/fee waiver

## I HAVE PERSONALLY MAILED OR SUBMITTED ELECTRONICALLY (check all that apply):

### Application Package:

\_\_\_\_ School-specific application:      \_\_\_\_\_ Hard copy mailed      \_\_\_\_\_ Applied online      \_\_\_\_\_ Date  
\_\_\_\_ Common Application:      \_\_\_\_\_ Applied online      \_\_\_\_\_ Date  
\_\_\_\_ Essay      \_\_\_\_\_ Activity Sheet  
\_\_\_\_ SAT/ACT Scores (you must arrange for scores to be sent directly from testing company)  
\_\_\_\_ College is test optional. Decided not to send scores.  
\_\_\_\_ Non-faculty recommendation from: \_\_\_\_\_  
\_\_\_\_ Other items or documents \_\_\_\_\_

## I NEED MY COUNSELOR TO MAIL OR SUBMIT ELECTRONICALLY (check all that apply):

\_\_\_\_ Transcript and Report Card      \_\_\_\_\_ School Profile      \_\_\_\_\_ Activity Sheet  
\_\_\_\_ Essay      \_\_\_\_\_ Other \_\_\_\_\_  
\_\_\_\_ SAT/ACT Scores (IF YOU CHECK THIS, **ALL** SCORES WILL BE SENT)  
\_\_\_\_ Last date taken: \_\_\_\_\_ ACT      \_\_\_\_\_ SAT  
\_\_\_\_ College is test optional. Decided not to send scores.

**Educator Recommendations:** How many total are needed: \_\_\_\_\_

\_\_\_\_ Counselor recommendation (is this required for this college? \_\_\_ yes \_\_\_ no)

\_\_\_\_ Teacher recommendations from: \_\_\_\_\_  
\_\_\_\_\_

\_\_\_\_ Non-faculty recommendations from: \_\_\_\_\_

### COUNSELOR USE ONLY:

Date Completed: \_\_\_\_\_  
\_\_\_\_ Sent through school mail  
\_\_\_\_ Given to student to mail  
\_\_\_\_ Sent through Naviance  
\_\_\_\_ Sent through US Mail

Updated 6/2014



# Non-Faculty Recommendation Form

**STUDENT:** Fill in the information below and give this form to the person from whom you are requesting a recommendation. Provide him or her with a stamped envelope addressed to the college and another stamped envelope addressed to your counselor at AHS. **Give the person at least 3 weeks' notice to complete your recommendation.**

Student Name: \_\_\_\_\_ Date: \_\_\_\_\_

*I hereby waive my right of access to this confidential recommendation. I give my consent for this recommendation to be released to the educational institutions to which I am applying.*

Student Signature: \_\_\_\_\_

.....

## WRITER:

- Please provide whatever information you think is important about the applicant's academic and personal qualifications.
- Please type your recommendation letter and attach this form as a cover sheet.
- Please send a copy of your letter to the Auburn High School Counseling Office.
- Keep a copy of your recommendation for this student on your hard drive in case it is needed.

Name: \_\_\_\_\_ Occupation: \_\_\_\_\_

How long have you known this student and in what context? \_\_\_\_\_

What are the first words that come to mind to describe this student? \_\_\_\_\_

Please rate this student on the following:

	Below Average	Average	Above Average	Superior	N/A
Intellect:	_____	_____	_____	_____	_____
Leadership:	_____	_____	_____	_____	_____
Character:	_____	_____	_____	_____	_____
Work ethic:	_____	_____	_____	_____	_____
Integrity:	_____	_____	_____	_____	_____
Commitment to school/community:	_____	_____	_____	_____	_____
Responsibility:	_____	_____	_____	_____	_____
Initiative:	_____	_____	_____	_____	_____

Signature: \_\_\_\_\_ Date: \_\_\_\_\_

## Parent Evaluations

### **PARENTS OR GUARDIANS:**

If you choose, you may write a brief statement about your child, which can be included in the records sent in support of college applications. Your statement might include:

1. Significant activities that your child has participated in during high school that are not mentioned elsewhere in the application.
2. Extenuating circumstances regarding your family that you want the college to know.
3. Evidence of your child's strengths and challenges.
4. Pertinent information that might have a favorable impact on admissions personnel.
5. Explanations of academic or personal items found elsewhere in the application.

If you choose to complete a parent evaluation, please

- Type the statement
- Sign and date the statement
- Include your child's full name
- Provide your child's school counselor with a copy of the statement for the child's college application file

**NOTE:** *Some colleges require a parent evaluation and will provide their own form as part of their application.*

# Scholarship Application Checklist

You **MUST** include a copy of this form with **EACH** scholarship application you submit to your counselor.

To **GUARANTEE THE MEETING OF YOUR DEADLINE**, Mrs. Hoff, counseling secretary, **MUST** receive your **COMPLETED APPLICATION** at least **15 WORKING DAYS PRIOR TO THE APPLICATION DEADLINE**.

STUDENT NAME: \_\_\_\_\_ Date: \_\_\_\_\_

NAME OF SCHOLARSHIP: \_\_\_\_\_

DEADLINE DATE: \_\_\_\_\_

I HAVE INCLUDED OR SUBMITTED ELECTRONICALLY (check all that apply):

\_\_\_\_\_ Application                      \_\_\_\_\_ Essay                      \_\_\_\_\_ Activity Sheet

\_\_\_\_\_ Non-Faculty Recommendation

From: \_\_\_\_\_

\_\_\_\_\_ Official transcript and report card that was requested previously from Mrs. Hoff (this includes last report card and SAT/ACT scores)

\_\_\_\_\_ Other items or documents \_\_\_\_\_

I NEED MY COUNSELOR TO INCLUDE (check all that apply):

\_\_\_\_\_ Teacher/Counselor Recommendations From:

\_\_\_\_\_

\_\_\_\_\_ Non-faculty Recommendations From: \_\_\_\_\_

**\*\*Please note: If you waived your right to see your letters of recommendation, we cannot distribute them to you. You will need to provide us with an envelope addressed to the scholarship organization and your completed application with all required documents, so that we can attach the recommendation and mail for you. You do not need to attach postage. Do not put your return address on envelope.**

**COUNSELOR USE ONLY: Date Completed:** \_\_\_\_\_

\_\_\_\_\_ *Given to Scholarship Coordinator for in-house review*

\_\_\_\_\_ *Sent through interoffice mail*

\_\_\_\_\_ *Sent through US mail*

\_\_\_\_\_ *Collected for organization to pick up*

\_\_\_\_\_ *Collected for organization and scanned to them via email*

\_\_\_\_\_ *Other* \_\_\_\_\_

Updated 7/14

**Deadlines To Turn In College and Scholarship  
Applications to Counseling Office**

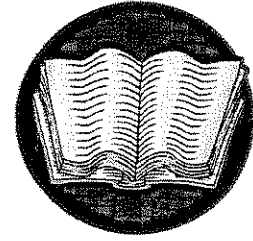
**Application materials must be received in the Counseling Office 3 weeks  
prior to deadline!!!!**

<b>College Deadline</b>	<b>Materials to Counseling Office Deadline</b>
November 15 <sup>th</sup>	October 24 <sup>th</sup>
December 1 <sup>st</sup>	November 7 <sup>th</sup>
January 1 <sup>st</sup>	December 12 <sup>th</sup>
January 15 <sup>th</sup>	December 19 <sup>th</sup>
February 1 <sup>st</sup>	January 9 <sup>th</sup>

\*\*\*\*\*

<b>Scholarship Deadline</b>	<b>Materials To Counseling Office Deadline</b>
March 1 <sup>st</sup>	February 13 <sup>th</sup>
March 15 <sup>th</sup>	February 27 <sup>th</sup>
March 30 <sup>th</sup> /April 1 <sup>st</sup>	March 13 <sup>th</sup>
April 15 <sup>th</sup>	April 1 <sup>st</sup>
April 30 <sup>th</sup> /May 1 <sup>st</sup>	April 10 <sup>th</sup>
May 15 <sup>th</sup>	May 1 <sup>st</sup>
May 31 <sup>st</sup>	May 15 <sup>th</sup>
June 15 <sup>th</sup>	May 29 <sup>th</sup>

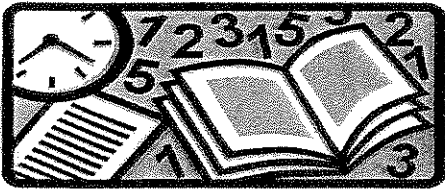
## College Admissions Testing Terms



CEEB CODE	A number each high school is assigned. <b>Auburn High School's number is 330-240.</b>	
PSAT	Practice college entrance exams taken in October primarily by sophomores and juniors. It also places competition for scholarship and enrichment programs.	them in
SAT Reasoning Test	A college entrance exam designed to measure academic aptitude in terms of verbal and numeric reasoning.	
ACT	(American College Test) A college entrance exam designed to measure classroom achievement in broad content areas as well as the ability to reason and the application of problem solving skills.	
SAT Subject Tests	Exams that measure knowledge or skills in a particular subject and ability to apply that knowledge. The fourteen tests fall into five general subject areas: English, foreign language, math, science and social studies. Some schools require that you take one or more of these exams. Check the specific requirements of the schools you are interested in.	

## College Related Terms

EARLY DECISION	Application made before regular admissions period. If accepted, applicant agrees to withdraw all other applications. If rejected, reviewed again for spring consideration. Used by those with strong school record, recommendations, scores and specific interest in one college.	
CROSS REGISTRATION:	Colleges located near one another agree to permit students to take courses at their respective institutions and share facilities thereby broadening their experience.	
CO-OP PROGRAMS	(Cooperative Education) College study is alternated with periods of PAID work in major fields of interest. Example: Rochester Institute of Technology and IBM.	
CALENDAR PLANS	4-1-4 means two equal parts divided by the month of January, trimester means the year is divided into three equal parts, semester means that the year is divided into two equal parts, quarter means the year is divided into four equal parts.	
UNIV. PARALLEL	Any program at a SUNY two-year school, which may provide 100% transfer to a four-year college.	
ROLLING	Applications are processed and colleges make decisions as they are ADMISSIONS rece	
GPA	(Grade Point Average) Grades are usually computed on a 4.0 system.	
3-2 PROGRAM	A five-year program requiring three years in a college and two years in another specialized college or university.	



## ABOUT ADMISSION TESTS

Most colleges require standardized tests for admissions. These test scores give college admissions officers and scholarship sponsors one indication of a student's ability to do college work. Tests most commonly used are the SAT Reasoning Test, SAT Subject Tests and ACT.

### The SAT Reasoning Test

The SAT Reasoning Test is a measure of the critical thinking skills you will need for academic success in college. The SAT assesses how well you analyze and solve problems – skills you learned in school that you will need in college. The three sections of the SAT are:

- Critical Reading, which has sentence completion and passage-based questions
- Math, which is based on the math that college-bound students typically learn during their first three years of high school
- Writing, which has multiple-choice questions and a written essay. Colleges want to know not only how well you write, but also how well you express and then back up a point of view. You will have 25 minutes to write your essay, which will count for approximately 30% of the score for the writing section. The essay will be scored as a first draft, not as a polished piece of writing.

*To do your best on the SAT Reasoning Test, you should know how the test is organized, the types of questions used, and how the test is timed and scored. It is also helpful to know when to guess and how to pace yourself. This information is in the SAT Preparation Booklet available in the counseling office.*

### The SAT Subject Tests

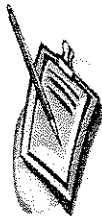
The SAT Subject Tests are one-hour, multiple-choice tests in the following subjects: English, history, math, science and foreign languages. The SAT Subject Tests measure your knowledge of particular subjects and your ability to apply that knowledge. Some colleges require one or more SAT Subject tests for admissions for placement purposes or for particular majors. The Writing Test includes a 20-minute essay and 60 multiple-choice questions. Whenever possible, these tests should be taken near the end of a one-year course (i.e., biology) or midway through the senior year in continuous subject matter areas such as English. Some colleges require various combinations of tests; others permit students to choose. **Check the college catalog to determine which tests to take.** The SAT Subject Tests were formerly called Achievement Tests.

*The College Board allows students to choose the scores they want sent from sittings of the SAT or individual SAT subject tests via the Internet. If you choose to have the Auburn High School Staff send the SAT/ACT scores, they will all be sent.*

# The ACT Test

***Each of the ACT tests is constructed to measure knowledge and skills typically taught in high school that are important for successfully completing a college education.***

- < The *English Test* measures your understanding of the conventions of standard written English in punctuation, grammar, and sentence structure and your skill in making the kinds of decisions made by good writers related to strategy, organization and style.
- < The *Mathematics Test* measures the mathematical skills that you have acquired in courses taken up to the beginning of grade 12. The test requires you to use your reasoning skills to solve practical problems in mathematics. Knowledge of basic formulas and computational skills are assumed as background for the problems.
- < The *Reading Test* measures reading comprehension as a product of your skill in referring and reasoning. The test items require you to derive meaning from several texts by referring to what is explicitly stated and by reasoning to determine implicit meanings and to draw conclusions, comparisons and generalization.
- < The *Science Reasoning Test* measures your skills in the interpretation, analysis, evaluation, reasoning and problem solving required in natural sciences course work. Test content is drawn from biology, chemistry, physics, and the physical sciences.
- < The *Writing Test* measures your ability to express judgments; maintain focus on the topic; develop a position by using logical reasoning and supporting your ideas; organize your ideas logically; and to use language clearly and effectively according to conventions of standard written English.



# TEST REGISTRATION AND SCORE REPORTING

Information materials for the SAT Reasoning Test, SAT Subject Tests, and ACT tests are available in the high school counseling office. Online registration is required. There is a late fee charged for missed deadlines.

Many colleges and the NCAA Clearinghouse require official score reports to be mailed directly by the testing agency. It is the students' responsibility to have the scores sent to the colleges to which they are applying. Special forms for this purpose are available in the counseling office.

\*\*\*The College Board allows students to choose the scores they want sent from sittings of the SAT or individual SAT subject tests via the Internet. *If you choose to have the Auburn High School staff send your SAT/ACT scores, they will all be sent.*

## SAT TESTING DATES

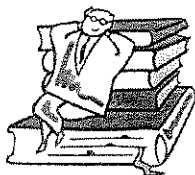
SAT 2014-2015 Test Dates	Test	Regular Registration Deadline (postmarked/submit by)
October 11, 2014 (In Auburn)	SAT & Subject Tests	September 12, 2014
November 8, 2014 (In Auburn)	SAT & Subject Tests	October 9, 2014
December 6, 2014	SAT & Subject Tests	November 6, 2014
January 24, 2015	SAT & Subject Tests	December 29, 2014
March 14, 2015	SAT Only	February 13, 2015
May 2, 2015 (In Auburn)	SAT & Subject Tests	April 6, 2015
June 6, 2015 (In Auburn)	SAT & Subject Tests	May 8, 2015

## ACT TESTING DATES

ACT 2014-2015 TEST DATES	Regular registration deadline	Late registration (fee required)
September 13, 2014	August 8, 2014	August 9-22, 2014
October 25, 2014 (In Auburn)	September 19, 2014	September 20-October 3, 2014
December 13, 2014	November 7, 2014	November 8-21, 2014
April 18, 2015 (In Auburn)	March 13, 2015	March 14-27, 2015
June 13, 2015 (In Auburn)	May 8, 2015	May 9-22, 2015

**CEEB Code for Auburn High School is**  
**330-240**





## LET'S COMPARE THE ACT AND SAT REASONING TESTS

	Scholastic Assessment Test	American College Testing
	SAT Reasoning Test	ACT
<b>TEST FEE:</b>	\$52.50	\$38.00 (\$54.50 w/Writing)
<b>TEST DESCRIPTION:</b>	No science section No trigonometry section Vocabulary emphasized Non multiple choice questions Guessing penalty No English Grammar Math accounts for 50% of Score Questions go from easy to hard in most sections You can choose which scores go to colleges	Science reasoning section Math sections include Trig. Vocabulary less important Entirely multiple choice No guessing penalty English grammar tested Math accounts for 25% of score Easy & hard questions mixed within sections You can choose which scores go to colleges
<b>SCORING:</b>	Scores adjusted for guessing. Most incorrect responses carry a penalty of one-third or one-quarter of a point.	Scores based on number of correct answers. No penalty for guessing.
<b>SCORE SCALES:</b>	Critical Reading Test: 200 - 800 Mathematics Test: 200 - 800 Writing Test: 200-800 SAT Total: 600-2400 (Sum of three test areas)	English Test: 1 - 36 Reading Test: 1 - 36 Mathematics Test: 1 - 36 Science Reasoning Test: 1 - 36 Writing Test: 2 - 12 ACT composite: 1 - 36 (Average of four tests) Writing Sub score: 2 - 12

**Please note:** Every effort has been made to represent the ACT and SAT Reasoning Test information accurately and concisely. All the information has been drawn from official publications of the organizations offering the tests.

## HELPFUL HINTS IN CHOOSING A COLLEGE

*Adapted from a publication of RANDOLPH-MACON COLLEGE, a coeducational liberal arts college in Ashland, VA.*

You should select the college that will best satisfy your needs, interests, lifestyle, and personal and professional goals. A good match between you and your college will be the key to your success and happiness over the next four years. To help you make that difficult final decision, we offer the following helpful hints, which may assist you in determining the college that is right for you.

### 1. VISIT EVERY COLLEGE

Visit (or revisit) every college you are considering, preferably during a week when classes are in session. We recommend that you tour the campus, attend one or two classes, meet with faculty in the department which interests you, eat in the dining hall and, perhaps most importantly, talk with current students. Students are the best sources of information about the college. They will talk honestly and knowledgeably about the social life, academic program, and atmosphere on campus, dorm life, and other topics that are important to you.

If possible, plan to spend one night in a college dormitory. The overnight visit will enable you to chat informally with students, get the feel of the campus, and sample life as a student. The Admissions Office at most colleges will arrange an overnight visit for you, either before or after acceptance. Remember that you are not just choosing a place to go to school; you are also choosing a home for the next four years. This should be a place where you feel comfortable, relaxed, involved and challenged.

### 2. CONSIDER ACTUAL COST RATHER THAN STICKER PRICE

Unfortunately, some students base their college choice on the sticker price - the full cost for tuition, fees, room and board - rather than on the actual cost of attending. Most colleges offer significant amounts of financial aid, including non-repayable grants, to students with demonstrated need. In addition, colleges frequently offer installment payment plans, low interest loans, academic scholarships, jobs on campus, and other forms of aid to students, irrespective of need. Aid is also available from other sources, including community groups and the state. When all forms of aid are considered, a college education, either private or public, can be surprisingly affordable. Apply for aid (even if you don't think you'll qualify) and consider actual cost when making your final decision.

### 3. CONTACT AN ENROLLED STUDENT

Try to contact a student from your high school or hometown who is enrolled at each college you are considering. If you don't know anyone at a particular college, ask the Admissions Office there to provide you with the name, address, and phone number of a student you could contact. Write or call the students and ask those tough questions you've been holding back - questions about campus life, difficulty of courses, dorm life, relations between students and professors, and general satisfaction of students with the college. Remember, no question is dumb if the answer is important to you.

#### 4. GET ANSWERS TO IMPORTANT QUESTIONS

You may have key questions, which would be better answered by individuals at the college rather than current students. Some questions might include:

- Does the college have an active Career Center to help me prepare for a successful job search after graduation?
- What percentage of graduates is accepted to graduate, medical, or law school?
- What help is available if I have difficulty with English, math or another subject?
- Will I have easy access to computers and other equipment on campus?
- What is the typical class size, and how much individual attention will I receive?
- What intramural or intercollegiate sports are available?
- What percentage of the students engages in athletics?
- What is the atmosphere on campus? Friendly? Relaxed? Competitive? Pressured?
- What is the faculty like? Caring? Friendly? Aloof? Rigid?
- Do professors or graduate students teach freshman courses?

Of course, your questions and concerns may be different from those listed above, but be sure that all your questions are answered fully before making your final decision. The Admissions Office and other college offices, will, in most cases, be happy to provide you with the information you want.

#### 5. TRUST YOUR INSTINCTS

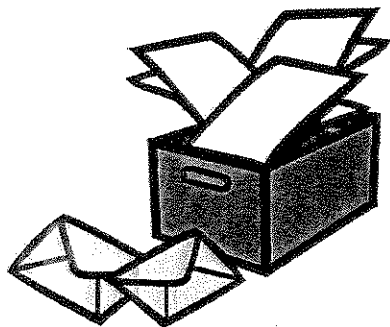
Selecting a college may be one of the first major decisions, that you have had to make. It is important for you to make an informed decision. You will also find, however, that your ultimate choice will be partially **emotional**, based on a feeling about where you will best fit in and be most happy. Even among colleges, which are similar in size, quality and academic offerings, each is unique in atmosphere, student makeup, and general feel. In the final analysis, one college will most likely feel right to you. You will be able to easily imagine yourself being a student there. Go with your instincts!

#### 6. CHECK AND STICK TO DEADLINES

While most reputable colleges subscribe to the May 1 Candidate's Reply Date for students to make their final commitment to a college, some colleges assign dorm rooms in the order that the reservation deposits are received. **If you know you want to attend a particular college and have a specific dorm preference, you may wish to consider indicating your intention to enroll prior to May 1.** Remember, however, that May 1 is officially the date when a decision must be made. Do not let colleges press you for a premature decision. Act only when you are comfortable with your decision!

Best of luck with your final decision. Our wish is for you to choose a college that best meets your academic and personal needs.

## ORGANIZING YOUR RESEARCH TIPS



Organization is the key to an effective school search. Try some of these suggestions for organizing your research:

### Create a Filing System

- Get a file cabinet, drawer, or crate – something that will keep file folders upright.
- Buy a package of file folders. You'll need at least one folder for each school. Clearly label the folder with the school's name.
- Store everything to do with a school in its own folder: catalogs, correspondence, forms, brochures, interview notes, and questions.
- If a folder starts getting too full, buy some accordion style or hanging folders. Designate one hanging folder for the school and break the contents up into specialized folders, such as "Correspondence," "Forms", "Brochures."

### Gather Supplies

Besides file folders, you may want to gather the following supplies:

- Colored markers
- Self-stick notes, also in different colors
- Good quality paper – you may need this later when you start applying
- Envelopes, in various sizes
- Stamps

### Get a Calendar

- Designate one calendar for all your scheduling and deadlines.
- Mark everything clearly.
- Use different colors for different schools.

### Create Contact Lists

- For each school, create a contact list with addresses, phone numbers, e-mail addresses, and URLs.
- Create a separate list of contact information for people you may want to use as references in the application process.



## SCHOOL INTERVIEW CHECKLIST

### Before Interview:

- Research colleges through brochures, course catalogs, and the Web.
- Make an appointment.
- Get directions to the campus admissions office.
- Practice answering the following sample questions.

### During Interview:

#### Be prepared to answer...

- Why do you want to attend this school?
- What do you think will be your major? Why?
- How would you describe yourself to a stranger?
- What is your greatest accomplishment?
- What is the most significant contribution you've made to your school or community?
- What do you see yourself doing in the future? In five years? In ten years?
- What is your favorite book? Who is your favorite author?
- Tell me about your family.
- What extracurricular activities are important to you?
- What is your strongest/weakest point?
- If you could have lunch with one special person (dead or alive) who would it be? What would be your first question?
- Who are your heroes and why?
- How would you spend \$1 million in 24 hours?

### Ask:

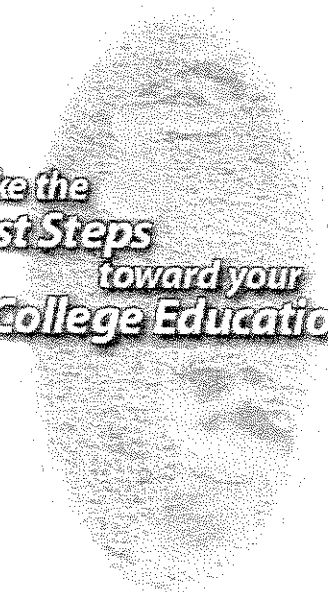
(Ask at least three questions that can't be answered in the school's brochures.)

- Why would you recommend this school?
- How would you describe college life at this school?
- Do you have any advice for me?

### Interview Tips:

- Get some practice. Try to schedule an interview at your "first choice college" last.
- Ask questions.
- Dress conservatively.
- Be focused, appropriately enthusiastic, confident, and honest.
- Thank the interviewer for the opportunity to learn more about the school.
- Make notes about the conversation.
- Send a thank you note.

# CAMPUS VISIT CHECKLIST



**Take the  
First Steps  
toward your  
College Education**

Visits to schools beat pictures in brochures any day! If you have the opportunity, you should experience college life first-hand during your junior and senior years to be sure your home away from home will be the right one for you.

## Planning the Visit:

- ✓ Get a map of the campus.
- ✓ Plan at least a full day (and stay overnight, if possible) at each school.
- ✓ Visit when school is in session.
- ✓ Arrange an interview with an admissions officer or sign up for a group session, if available.
- ✓ Prepare a list of questions you might have about the school.

## What to Do:

- ✓ Take a campus tour.
- ✓ Talk with students and faculty.
- ✓ Attend a sporting event, if possible.
- ✓ Check out the stuff that's important to you (e.g., dorms, libraries, student unions, athletic facilities).

## What to Look For:

- ✓ Watch how students spend their time: studying, partying, socializing, exercising...
- ✓ Check out the size of the average dorm room and what the normal furniture is.
- ✓ Look at what students have in their rooms and how they've arranged it (e.g., computers, TVs).
- ✓ What's available off campus? Restaurants, theaters, museums, public libraries, job opportunities?

## What to Ask:

- ✓ Are there active fraternities and sororities on campus?
- ✓ How good is the food in the dining facilities?
- ✓ Can you stay in the dorm for more than freshman year? Can you have a single room or must you share? And if you're sharing, with how many others?
- ✓ What intercollegiate and intramural teams are represented on campus?
- ✓ What kinds of clubs and societies are represented on campus?
- ✓ How well are the campus and its facilities maintained?
- ✓ How safe is the campus? Where are the campus police located? Are there safety programs, such as escorts and emergency phone boxes, on campus?

## College Comparison Chart

College Name	Location	Size	Cost	Admissions Criteria	Percent accepted	My Priority Needs	Visit (yes or no)	What I like (pros)	What I don't like (cons)
Binghamton Univ.	Binghamton, NY	11,065 undergrads	\$18,000	Middle 50% SAT CR: 560-660 SAT Math: 600-690 ACT: 25-29	66% 3.5 GPA 27% 3.0-3.4 Approx. 42%	Competitive, school within 2 hours from home, musical theatre	Yes	Academic reputation, brand new housing, distance from home, cost	Does not have the exact major I am looking for

## THE APPLICATION PROCESS



After you have spent some time looking at how and why college fits into your plans and after you have evaluated all the information you have collected, you are now ready to formally apply to several colleges. You should plan to have your applications vary in degree of selectivity. Three to five applications should be adequate for most students. Your counselor can help you decide on the number and can discuss the selectivity of each college with you.

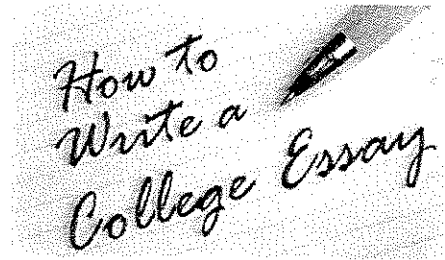
The Common Application and the SUNY Application are available online, as are most school-specific applications. Your counselor will submit your supporting documents online or if necessary, by mail. **Remember, we cannot give you a copy of your official transcript for mailing.**

## HOW TO MAKE YOUR APPLICATION STAND OUT

Here are some tips from college admissions officers:

- < Tell us why the most important activities - AP physics project, a team captaincy, a summer abroad - have changed you. It's more important than a list of activities with which you've had only limited contact.
- < View the admission forms as the place to chronicle your family background, school history, activities, work experiences, and other autobiographical information you want us to know. Be clear and concise and use specific detail.
- < Take advantage of any invitation to submit evidence of your scholarly and creative endeavors - slides of art work, CDs of musical performances, photography, poetry, creative and journalistic writing, independent study, whatever else you feel is important for us to know. Do not tell us only about your successes; tell us about what you truly enjoy doing, what inspires you, and what holds meaning for you.
- < Don't miss the opportunity to have an interview. The interview is an excellent time for you to talk about your interests and goals with a member of the Admissions Committee and to see what a college can offer you.





## WRITING THE SUCCESSFUL COLLEGE APPLICATION ESSAY

In partnership with your 12<sup>th</sup> grade English Teachers, the school counselors will present information about college essays in your senior English class in early fall. Writing a strong and well thought out college essay is an essential part of the college application process. A publication entitled "Writing the Successful College Essay" is available in the Counseling Office.



## WRITING THE SUCCESSFUL SCHOLARSHIP APPLICATION ESSAY

Many scholarships require an essay as part of their application. Be sure to carefully read the requirements and tailor your essay accordingly.

# GETTING RECOMMENDATIONS

Letters of recommendation are usually required for your application. Request recommendations from people who know your strengths. Teachers and counselors are usually the best choices. An employer or community leader can be another option if he or she knows you well and can emphasize your good qualities and achievements.

Ask for recommendations early so there is enough time to get them in comfortably before the deadline. It's considerate on your part. It's also smart – waiting until the last minute may not allow the recommender enough time to do you justice and will cause you both unnecessary stress.

## Procedure:

1. Ask your recommender in person if they would feel comfortable writing a letter or you.
2. Submit your recommenders' names in Naviance.
3. Provide your recommender with an activity sheet and student questionnaire to facilitate the writing process.
4. Give your recommender a deadline, allowing at least two weeks to complete the letter.
5. If using the Common Application, complete the FERPA waiver section on the online Common Application. See your counselor for assistance and information regarding FERPA.
6. Follow-up with your counselor or Mrs. Hoff to ensure letters have been received.

## Suggestions:

1. Send thank you notes to your recommenders.
2. Let recommenders know your application results.

Jane Smith  
 2 First Avenue  
 Auburn, NY 13021  
 Cell phone: (315) 555-5555  
 Email: janesmith [224@hotmail.com](mailto:224@hotmail.com)

**Academic Awards:**

	<b><u>Grade:</u></b>
University of Rochester Bausch and Lomb Science Award	11
LeMoyne College Heights Award	11
High Honor Roll	9, 10, 11, 12
National Honor Society	10, 11, 12
Spanish Honor Society	10, 11, 12

**Athletic Activities/Awards:**

Varsity Basketball	9, 10, 11, 12
Varsity Soccer	9, 10, 11, 12
Varsity Softball	9, 10, 11, 12
Basketball Academic All-American	10, 11
Soccer CNYCL All League Honorable Mention	11, 12
Softball All League First Team	10, 11

**School Activities**

Character Education Club	9, 10, 11, 12
Varsity Club	9, 10, 11, 12
SADD Club	9, 10, 11, 12
Student Government	10, 11, 12
Yearbook Club	9, 10, 11, 12
Marching Band	9, 10, 11, 12

**Leadership Activities**

Character Education Club Secretary	9
Character Education Club President	10, 11, 12
Varsity Club President	12
SADD Club Treasurer	10, 11, 12
Yearbook Editor	12
Varsity Basketball Captain	12
Varsity Soccer Co-Captain	12

**Community Service**

Red Cross Blood Drive Volunteer (4 Drives per year)	9, 10, 11, 12
Westminster Manor Adult Home Bingo Calling (once a month)	9, 10, 11, 12
Y-Pals (Mentor younger student once a week/one hour)	9, 10, 11, 12
St. Francis Church altar server (once a week)	9, 10, 11, 12

**Work Experience**

Wegman's (12-15 hours a week)	10, 11, 12
Babysitter	9, 10, 11, 12

## Student Questions for Recommendation Letters

Student \_\_\_\_\_ Recommender \_\_\_\_\_

1. What are your academic plans and goals over the next five years?
2. What are your strengths as a student, and in what areas can you continue to improve?
3. What hobby or activity are you most passionate about? Why?
4. How would you describe your experience in my class?
5. How would your best friends describe you?
6. What is the most important thing about you that I should know?

# HOW DO COLLEGES EVALUATE APPLICANTS?

Colleges select students on the following criteria:

**High School Record** - The transcript includes grades earned in grades 9 through 11; level of instruction of each course (e.g., honors, A.P., Regents); credits earned in each course and the total credits earned each year; all Regents examination scores, failure grades, repeat grades and summer school grades; and cumulative average. First semester grades of the 12<sup>th</sup> grade are sent in February, and final senior grades will be sent to the institution you plan to attend, at your request.

**Rank in Class** - based on final averages in 9<sup>th</sup>, 10<sup>th</sup> and 11<sup>th</sup> grades in all credit-bearing subjects with numerical grades. This 6-semester rank is computed by October of your senior year. Colleges are informed that grades are weighted.

**Test Data** - Colleges evaluate all available test data. Tests taken in high school as well as college entrance exams are considered. **This is neither the only, nor the primary consideration.** First comes your high school record. People with high aptitude and mediocre records have been refused while students with average and sometimes below-average test scores, but consistently good achievement records are admitted.

**Extracurricular Activities** - indicate your fields of interest and also tell something about how well you get along with other people your own age. The offices you have held in various organizations show whether or not you have demonstrated leadership qualities. It is not desirable to see how many activities you can get on your record. Too many activities may indicate that you are spreading yourself too thin and that you are not doing a very good job in any one organization. Concentrate on a few activities in which you are really interested. When all factors are equal, the colleges choose those students who have taken part in outside activities.

**Recommendations of Counselor and Teachers** - Colleges weigh strongly what your teachers and counselor have to say about you. Review the information above under *Recommendations*. If requested, your counselor will send a letter of recommendation with your transcript and the secondary school report forms required by colleges.

**The Application** - The way you fill out your application and write any required essays sends a message to the person(s) evaluating your application. Review the material previously discussed under the *Application Process* and checklist for senior year.

## POST-SECONDARY EDUCATION

- Apprenticeships:** An agreement to serve an industry or organization for a certain period of time in order to learn a trade or craft. These are experience-oriented and may be non-paid positions.
- Proprietary School:** A privately owned profit-making institution which usually has a specific program focus such as business, health, modeling or truck driving, etc. This type of school grants certificates or diplomas. (Can be non-degree or degree-granting)
- Trade & Technical School:** A two-year institution, which offers terminal occupational programs, intended to prepare students for immediate employment in fields related to engineering and physical sciences. These schools may also offer one-year certificate programs.
- College:** An institution that offers educational instruction beyond high school level in a two or four-year program.
- Junior College:** A two-year institution of higher learning which provides vocational training and academic curricula (terminal and transfer)
- Terminal:** Academic program is complete in itself. A student who completes it may not apply to a four-year college for further study without completing additional course requirements.
- Transfer:** Academic program is designed to lead into a four-year course at another college or university.
- Liberal Arts College:** 4-year institution which emphasizes program of broad undergraduate education. Pre-professional or professional training may be available but is not stressed.
- University:** An academic organization which grants undergraduate and graduate degrees in a variety of fields and which supports at least two degree granting professional schools that are not exclusively technological (such as medicine, journalism, or agriculture). It is composed of a number of schools or colleges, each of which encompasses a general field of study.
- Nursing School:** There are three kinds of nursing schools. At schools affiliated with hospitals, students receive R.N.\* degrees upon completion of their training. At schools affiliated with two-year colleges, students receive an Associate Degree and an R.N.\* At schools affiliated with four-year colleges, students receive both a B.S. and an R.N.\* (\*passing of State Board Exam required)
- Military School:** Federal Military Academics prepare officers for the Army, Navy and Air Force. These institutions (West Point, Annapolis, Air Force Academy, U. S. Coast Guard and Maritime Academy) require recommendation and appointment by members of Congress. Private and state supported military institutes, however, operate on a college application basis. They all offer degree programs in engineering and technology with concentrations in various aspects of military science. The application process should start in the spring of your junior year. See your guidance counselor for information sheet.
- Business School:** Business schools fall into two categories. At some colleges it is possible to specialize in business administration or in a two-year secretarial course in conjunction with supplementary liberal arts courses. Other institutions offer predominantly the business or secretarial courses and may or may not be regionally accredited.

## Financial Aid Terms

F.A.F.S.A. and PROFILE	Financial aid forms used to apply for many types of institutional, state and federal aid. Collect detailed information each year about parent(s) and student's financial situation. Check with each college Financial Aid Office to find out which forms to use.
FAMILY CONTRIBUTION	The amount the parent(s) and student may reasonably be expected to pay as determined through completion of the F.A.F.S.A., which is sent to the College Scholarship Service (CSS) for analysis.
GRANTS	Awards based on financial need, which the student does NOT need to repay. Others are called academic, merit, or non-need scholarships.
PELL GRANT	Award program from the federal government that is based on need.
S.E.O.G.	(Supplemental Educational Opportunity Grant) A federal program distributed to colleges for students with exceptional financial need.
T.A.P.	(Tuition Assistance Program) Grants given to New York State residents who attend college IN STATE, based on need.
PERKINS STUDENT LOAN	Federally subsidized low interest loan given by colleges to students with demonstrated need. Repayment begins six months after graduation from college with up to ten year replacement.
STAFFORD LOAN	A low interest loan made to students by a lender such as a bank, credit union or savings and loan association, to help them pay for their education after high school.
PLUS	A parent loan program, which allows parents to borrow money for their undergraduate dependent child. The student should apply for a Stafford Loan before the parent applies for PLUS. The interest rate is variable and repayment begins within two months after the loan is received.
C.W.S. or C.W.S.P.	(College Work Study Program) Colleges provide guaranteed part-time jobs on or off campus to students with financial need at guaranteed wages.
E.O.P.	(Educational Opportunity Program) This program provides comprehensive costs of higher education at STATE schools for academically and financially disadvantaged youth who qualify. See your counselor.
H.E.O.P.	(Higher Education Opportunity Program) This program has the same criteria as E.O.P. except this program is used at PRIVATE colleges. See your counselor.
ACADEMY APPOINTMENTS:	Academically qualified students interested in becoming professional officers may apply (early) to Annapolis, West Point or the Air Force Academy. The application process begins SPRING of the JUNIOR year. See your counselor.
R.O.T.C.	(Reserved Officer Training Corps - Army, Navy or Air Force) Participation in military courses on selected campuses as either a non-scholarship or scholarship student.

## NON-DEGREE

CERTIFICATE: One year programs

---

## TYPES OF DEGREES

- AS/AA: Associate of Science or Associate of Arts degree, awarded by two-year institutions.
- AAS: Terminal two-year college program which includes liberal arts. Examples: automotive technology and journalism
- AOS: Associate degree in occupational studies. Differs from AAS in that NO liberal arts courses are required.
- BS/BA: Bachelor of Science and Bachelor of Arts degrees, awarded by four or five-year undergraduate program.
- BFA: Bachelor of Fine Arts, awarded by four-year undergraduate programs.

---

## ADVANCED DEGREES

- PHD: Doctor of Philosophy (minimum 3 years additional study)
- Ed. D.: Doctor of Education (minimum 3 years additional study)
- LLD: Doctor of Law (minimum 3 years additional study)
- MD: Medical Doctor (minimum 3 years additional study plus residency)
- MS: Master of Science (minimum 1-2 years additional study)
- MA: Master of Arts (minimum 1-2 years additional study)
- MBA: Master of Business Administration (minimum 1-2 years additional study)



# What Can I Do With A Major In.....

Careers Related To Academic Subject Areas

[www.uncw.edu/career/whatcanidowithamajorin.html](http://www.uncw.edu/career/whatcanidowithamajorin.html)

## Compliments of American College Testing

### ENGLISH (includes Speech)

Actor/Actress	Columnist	Editor	Proofreader	Speech/Language
Advertising Mgr.	Copywriter	Librarian	Publisher	Pathologist
Author	Counselor	Legal Assistant	Radio/TV Announcer	Teacher
College Professor	Dramatist	Minister (Clergy)	Reporter/Journalist	Technical Writer

### MATH (includes Computer Science Math)

Accountant	Computer Prog.	Farmer-Rancher	Marketing Specialist	Physicist
Account Executive	Computer Systems	Financial Analyst	Market Research	Production Planner
Actuary	Analyst	Hotel/Motel Manager	Analyst	Real Estate Agent/ Appraiser
Advertising Mgr.	Computer Sys Spec	Importer-Exporter	Mathematician-	Sales Manager
Architect	Credit Manager	Insurance Agent/ Underwriter	Statistician	Scientist
Astronomer	Economist	Loan Officer	Medical Records Adm	Securities
Bank Officer	Educational Adm.	Manager	Metallurgist	Salesperson
Business Manager	Engineer (refer to Natural Sciences)	Manufacturer's Rep	Meteorologist	Teacher
Buyer-Purch Agent			Oceanographer	Travel Agent
College Professor			Personnel Manager	
			Physician Assistant	

### SOCIAL STUDIES (includes Economics & Psychology)

Anthropologist	Geographer	Job Analyst	Market Research	Psychologist
College Professor	Gerontologist	Lawyer	Analyst	Real Estate Agent
Counselor	Governmental Svs.	Legal Assistant	Minister (Clergy)	Recreation Leader
Criminologist	Historian	Librarian	Personnel/Human	Reporter
Economist	Importer-Exporter	Lobbyist	Resources	Social Worker
Educational Adm.	Insurance Agent/ Underwriter	Manufacturer's Rep	Manager	Sociologist
Employment Counselor			Political Scientist	Teacher
Foreign Service			Probation Officer	Urban Planner
			Public Relation Rep	

### NATURAL SCIENCES

Aerospace Engr.	Chemist	Mechanical Engineer	Nutritionist-Dietician	Physiologist
Anthropologist	College Professor	Medical Records	Occupational Therapist	Psychiatrist
Astronomer	Dentist	Administration	Oceanographer	Radio/TV Engineer
Automotive Engr.	Ecologist	Medical Technologist	Optometrist	Respiratory Therapist
Biomedical Engr.	Electrical Engineer	Meteorologist	Petroleum Engineer	Soil/Water Conservation
Biologist	Forester	Mining Engineer	Pharmacologist	Speech/Language Pathologist
Biochemist	Funeral Director	Nuclear Engineer	Physician	Teacher
Botanist	Geologist	Nuclear Medicine	Physicist	Veterinarian
Chemical Engineer	Horticulturalist	Technician	Physical Therapist	Zoologist
Civil Engineer	Industrial Engineer	Nurse		

### ART (includes Music & Drama Theater)

Actor/Actress	Cartoonist	Fashion Artist	Landscape Architect	Sculptor
Advertising Mgr.	Choreographer	Film Producer/Director	Musician	Singer
Architect	College Professor	Illustrator	Orchestra Leader	Teacher
Artist-Painter	Composer-Song	Interior Decorator	Photographer	TV Program Director
Audio Technician	Writer		Scriptwriter	Video Productionist
	Dancer			

### FOREIGN LANGUAGE

Archivist	Foreign Buyer	International Lawyer	International Trade	Special FBI/CIA
Bilingual Nurse	Foreign Service Officer	International Market	Economist	Agent
Bilingual Social Worker	Importer-Exporter	Manager	Interpreter	Technical Publications
College Professor	Intelligence Specialist	International Relations	Linguist	Translator
				Travel Agent

# The NCAA and NCAA Eligibility Center

## How to use this Guide...

The Guide addresses issues for three important groups of readers:

- High school students who hope to participate in college athletics at an NCAA Division I or II college or university;
- Parents and legal guardians; and
- High school counselors and athletics administrators.

## What is the NCAA?

The NCAA, or National Collegiate Athletic Association, was established in 1906 and serves as the athletics governing body for more than 1,300 colleges, universities, conferences and organizations. The national office is in Indianapolis, Indiana, but the member colleges and universities develop the rules and guidelines for athletics eligibility and athletics competition for each of the three NCAA divisions. The NCAA is committed to the student-athlete and to governing competition in a fair, safe, inclusive and sportsmanlike manner.

The NCAA membership includes:

- 346 active Division I members;
- 291 active Division II members; and
- 439 active Division III members.

One of the differences among the three divisions is that colleges and universities in Divisions I and II may offer *athletics scholarships*, while Division III colleges and universities do not.

For more information about the NCAA or its members, please visit [NCAA.org](http://NCAA.org).

## What is the NCAA Eligibility Center?

The NCAA Eligibility Center certifies the academic and amateur credentials of all college-bound student-athletes who wish to compete in NCAA Division I or II athletics.

To assist with this process, the NCAA Eligibility Center staff is eager to foster a cooperative environment of education and partnership with high schools, high school coaches and college-bound student-athletes. Ultimately, the individual student-athlete is responsible for achieving and protecting his or her eligibility status.

## How to find answers to your questions

The answers to most questions can be found in this Guide or by:

- Accessing the NCAA Eligibility Center's resource page on its website at [www.eligibilitycenter.org](http://www.eligibilitycenter.org), clicking on "Resources" and then selecting the type of student you are (U.S., International or home school). You can then navigate through the resources to find helpful information.
- Contacting the NCAA Eligibility Center at the phone number on this page.

In addition, if you are sending transcripts or additional information to the NCAA Eligibility Center or have questions, please use the following contact information.

## NCAA Eligibility Center Contact Information

### NCAA Eligibility Center:

Certification Processing  
P.O. Box 7136  
Indianapolis, IN 46207-7136

### Package or overnight delivery:

Certification Processing  
1802 Alonzo Walford Sr. Drive  
Indianapolis, IN 46202

### Web address:

[www.eligibilitycenter.org](http://www.eligibilitycenter.org)  
[www.2point3.org](http://www.2point3.org)

Follow @NCAA\_EC

### NCAA Eligibility Center customer service:

U.S. callers (toll free): 877/262-1492

International callers: 317/223-0700

Fax: 317/968-5100



# Academic Eligibility Requirements

## Division I

If you want to receive athletics aid (scholarship), practice and compete during your first year, you must:

- Graduate from high school;
- Complete these 16 core courses:
  - 4 years of English;
  - 3 years of math (Algebra 1 or higher);
  - 2 years of natural or physical science (including one year of lab science if offered by your high school);
  - 1 extra year of English, math, or natural or physical science;
  - 2 years of social science; and
  - 4 years of extra core courses (from any category above, or foreign language, comparative religion or philosophy);
- Note: Courses with similar content may be deemed duplicative by the NCAA Eligibility Center.*
- Earn a minimum required grade-point average in your core courses; and
- Earn a combined SAT or ACT sum score that matches your core-course grade-point average and test score on the sliding scale (for example, a 2,400 core-course grade-point average needs an 860 combined SAT score).

### Time Limitation on Core Courses

- You must complete the 16 core-course requirement within four consecutive academic years (i.e., eight semesters) from the start of ninth grade.
- Students graduating early (in less than eight semesters) must still meet core-course requirements.
- If you graduate on time from high school within four consecutive academic years (i.e., eight semesters) from the start of ninth grade:
  - Prior to full-time collegiate enrollment, you may use one additional core-course unit completed within one year from the date of on-time graduation.
  - You may complete the core course at a location other than the high school from which you graduated.
  - You will be required to provide a transcript with grade and credit from this school.

## Division I Qualifier

Being a qualifier enables you to be eligible to:

- Practice and compete for your college or university during your first year of college;
- Receive an athletics scholarship during your first year of college; and
- Play four seasons in your sport if you maintain your academic eligibility from year-to-year.

## Division I Nonqualifier

As a nonqualifier, you will *not* be able to:

- Practice or compete for your college or university during your first year of college; or
- Receive an athletics scholarship during your first year of college, although you may receive need-based financial aid.

You may not participate in more than three seasons of competition in your sport. To earn a fourth season, you must complete at least 80 percent of your degree requirements before beginning your fifth year of college.

## Students Enrolling on or After August 1, 2016

The initial-eligibility standards for NCAA Division I college-bound student-athletes are changing. *Note: College-bound student-athletes first entering a Division I college or university on or after August 1, 2016, will need to meet new academic requirements in order to receive athletics aid (scholarship), practice or compete during their first year.*

There will be three possible initial-eligibility outcomes:

- **Qualifier:** May receive athletics aid (scholarship), practice and compete in the first year of enrollment at the Division I college or university.
- **Academic Redshirt:** May receive athletics aid (scholarship) in the first year of enrollment and may practice in the first regular academic term (semester or quarter) but may *not* compete in the first year of enrollment. The student-athlete must successfully complete nine semester hours or eight quarter hours in the initial term at his/her college or university to continue to practice in the next term.
- **Nonqualifier:** Cannot receive athletics aid (scholarship), practice or compete in the first year of enrollment.

Here are the new requirements:

*(For college-bound student-athletes first entering a Division I college or university on or after August 1, 2016.)*

### Qualifier must:

- Complete 16 core courses (same distribution as in the past);
  - Ten of the 16 core courses must be completed before the start of the seventh semester (senior year) of high school.
  - Seven of the 10 core courses must be English, math or natural or physical science.
- Have a minimum core-course grade-point average of 2.300;
  - Grades earned in the 10 courses required before the seventh semester are "locked in" for purposes of grade-point average calculation.
  - A repeat of any of the "locked in" courses will not be used to improve the grade-point average if the repeat occurs after the seventh semester begins.
- Meet the sliding scale of grade-point average and ACT/SAT score; and
- Graduate from high school.

### Academic Redshirt must:

- Complete the 16 core-course requirement;
- Have a minimum core-course grade-point average of 2.000;
- Meet the sliding scale of grade-point average and ACT/SAT score; and
- Graduate from high school.

Student-athletes who fail to meet the required 10 core courses prior to the start of the seventh semester (seven of which must be in English, math, or natural or physical science), will be allowed to retake core courses in the seventh or eighth semester, which will be used in their academic certification for the purposes of meeting the academic redshirt requirements.

**Nonqualifier:** Fails to meet the standards for a qualifier or for an academic redshirt.

**NCAA Division I Sliding Scale**  
Use for Division I prior to August 1, 2016

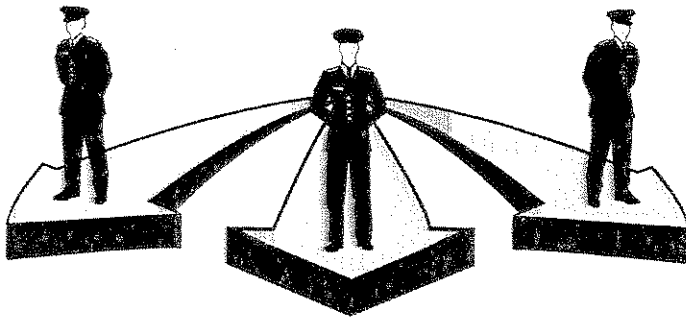
Core GPA	SAT	ACT
3.550 & above	400	37
3.525	410	38
3.500	420	39
3.475	430	40
3.450	440	41
3.425	450	41
3.400	460	42
3.375	470	42
3.350	480	43
3.325	490	44
3.300	500	44
3.275	510	45
3.250	520	46
3.225	530	46
3.200	540	47
3.175	550	47
3.150	560	48
3.125	570	49
3.100	580	49
3.075	590	50
3.050	600	50
3.025	610	51
3.000	620	52
2.975	630	52
2.950	640	53
2.925	650	53
2.900	660	54
2.875	670	55
2.850	680	56
2.825	690	56
2.800	700	57
2.775	710	58
2.750	720	59
2.725	730	59
2.700	730	60
2.675	740-750	61
2.650	760	62
2.625	770	63
2.600	780	64
2.575	790	65
2.550	800	66
2.525	810	67
2.500	820	68
2.475	830	69
2.450	840-850	70
2.425	860	70
2.400	860	71
2.375	870	72
2.350	880	73
2.325	890	74
2.300	900	75
2.275	910	76
2.250	920	77
2.225	930	78
2.200	940	79
2.175	950	80
2.150	960	81
2.125	970	82
2.100	980	83
2.075	990	84
2.050	1000	85
2.025	1010	86
2.000	1010	86

**NCAA Division I Sliding Scale**  
Use for Division I beginning August 1, 2016

Core GPA	SAT	ACT
3.550 & above	400	37
3.525	410	38
3.500	420	39
3.475	430	40
3.450	440	41
3.425	450	41
3.400	460	42
3.375	470	42
3.350	480	43
3.325	490	44
3.300	500	44
3.275	510	45
3.250	520	46
3.225	530	46
3.200	540	47
3.175	550	47
3.150	560	48
3.125	570	49
3.100	580	49
3.075	590	50
3.050	600	50
3.025	610	51
3.000	620	52
2.975	630	52
2.950	640	53
2.925	650	53
2.900	660	54
2.875	670	55
2.850	680	56
2.825	690	56
2.800	700	57
2.775	710	58
2.750	720	59
2.725	730	59
2.700	730	60
2.675	740	61
2.650	750	61
2.625	760	62
2.600	770	63
2.575	780	64
2.550	790	65
2.525	800	66
2.500	810	67
2.475	820	68
2.450	830	69
2.425	840	70
2.400	850	70
2.375	860	71
2.350	870	72
2.325	880	73
2.300	890	74
2.275	900	75
2.250	910	76
2.225	920	77
2.200	930	78
2.175	940	79
2.150	950	80
2.125	960	81
2.100	970	82
2.075	980	83
2.050	990	84
2.025	1000	85
2.000	1010	86

ACADEMIC REDSHIRT

Note: to compete in Division I, students enrolling on or after August 1, 2016, must earn a minimum 2.300 GPA in 16 core courses, 10 of which must be completed before the start of the seventh semester. (seven of those courses must be in English, math, or natural or physical science, and all 10 courses are "locked in" for purposes of GPA calculation) and must earn a combined SAT or ACT sum score that matches your core-course GPA on the sliding scale above.



## UNITED STATES MILITARY ACADEMIES

Any junior, male or female, interested in the United States Military Academies should investigate the application procedures leading to acceptance. As in past years, the application process begins in the spring of your junior year and terminates approximately November 15<sup>th</sup>. The process includes filling out and mailing the application forms, taking the necessary college admissions tests and requesting that test scores be mailed to the appropriate program or institution. Deadline dates vary. It is your responsibility to know when they are.

Competition is stiff. Candidates for all but the Coast Guard Academy must have a nomination, usually from a member of Congress or the Vice President of the United States. Spring semester of your junior year is the recommended time to apply for a nomination, but later requests may be accepted. If you are interested in securing an appointment to one of the academies, you should write to your senators and representatives and to the academy of your choice for additional information. Your counselor will be happy to help you draft your letter.

The academies offer four years of college education leading to a Bachelor of Science degree. Cadets and midshipmen – except Merchant Marine Academy cadets – receive a monthly allowance plus tuition, medical care, room and board. With the exception of the Merchant Marine Academy, graduates receive regular commissions and must serve on active duty for at least five years after receiving their commissions. Merchant Marine Academy midshipmen receive a yearly allowance during their three years on shore at the Academy plus tuition, food and living quarters. In addition, they receive a monthly allowance during their year of training at sea. Merchant Marine Academy graduates receive third mate or third assistant engineer licenses and are commissioned as ensigns in the Navy Reserve.

Visit the following websites for more information:

U. S. Air Force Academy  
[www.usafa.af.mil](http://www.usafa.af.mil)

U. S. Military Academy  
[www.westpoint.edu](http://www.westpoint.edu)

U. S. Naval Academy  
[www.usna.edu](http://www.usna.edu)

U. S. Merchant Marine Academy  
[www.usmma.edu](http://www.usmma.edu)

U. S. Coast Guard  
[www.cga.edu](http://www.cga.edu)

Students who are interested in military service may seek other options as well:

### College Reserve Officer Training Corps (ROTC)

The following websites have extensive information about ROTC programs and how to combine your military training and college education:

[www.goarmy.com/rotc.html](http://www.goarmy.com/rotc.html)

[www.navy.com/joining/education-opportunities/nrotc](http://www.navy.com/joining/education-opportunities/nrotc)

[www.marines.com/officer](http://www.marines.com/officer)

[www.afrotc.com](http://www.afrotc.com)

### Military Enlistment Upon Graduation From High School

Contact a recruiter for information on enlisting:

#### Coast Guard

1526 Walden Avenue  
Suite 500  
Cheektowaga, NY 14225  
716-893-2429

#### Army

Carr Building  
188 Genesee Street  
Auburn, NY 13021  
315-252-9548

#### Navy

372 Northern Lights Plaza  
Building 710  
North Syracuse, NY 13212  
315-455-1684

#### Air Force

372 Northern Lights Drive  
North Syracuse, NY 13212  
315-455-8310

#### Marine Corps

188 Genesee Street  
Suite 112  
Auburn, NY 13021  
315-252-6412

# Frequently Asked Questions

## ***When should I begin the college search process?***

It is never too early to start. Use the college search timeline on page 5 to help guide you.

## ***What is the best college for me (or my child) to attend?***

Only the student can ultimately answer this question. As your school counselor, we can help you examine your interests, educational preferences, career options and college opportunities to assist you with this decision-making process. Also, keep in mind that more than one college can meet your needs.

## ***How many colleges should I apply to?***

This is a family decision and should be discussed with the adults who are assisting you with this process before you start. For some students, one application is sufficient, as long as they are certain they will meet the admission requirements (e.g., community college). Students applying to four year institutions may want to be sure they have included at least one safety school in case they are denied admission into the more competitive colleges they have applied to. **Keep in mind that the safety school/s should be an institution you would want to attend if the other options do not work out. Do not choose a school you have no interest in attending.** Take the time to find a less-competitive school that meets your needs early in the process, so you are prepared should this situation happen to you.

## ***College applications are expensive. Is there any help available for application fees?***

Yes. See your school counselor to see if your family income allows you to be eligible for a **single administration fee waiver for the SAT/ACT exam** and/or college applications.

## ***What is a good SAT or ACT score?***

This is relative to the level of competitiveness of the college a student is choosing. See freshman class admissions profile on page 44 and examine the criteria for admissions for the colleges you are considering. Keep in mind standardized test scores are only one of the many criteria that admissions staff are considering when reviewing student applications.

## ***When should I take my SAT or ACT exam?***

We recommend that students take at least one exam in May or June of their junior year. This allows them to have participated in a Spring SAT preparatory course, receive their scores over the summer and have the choice to take the test over in October or November should they choose to.

## ***Should I take my SAT or ACT again?***

College admissions representatives suggest taking each test more than once. Many will look at your highest scores on each section.

***Do I have to send my SAT/ACT scores from the testing service, or can AHS send my scores?***

This varies from institution to institution and can change from one year to another. Be sure to check the college admissions of each school so you know what to inform your school counselor to send when the time comes.

**Attention student athletes:** The NCAA Clearinghouse now requires scores to be sent directly from the College Board testing service.

***What is the SAT II or the SAT Subject Test?***

The SAT II, also known as the subject tests are content specific exams created by the College Board that some students may be required to take for admission into a college. Typically, it is the more competitive colleges that may require SAT subject tests, so be sure to know the admissions criteria for all of the colleges you are considering.

***Is it better to take easier courses in high school and achieve a higher overall GPA, or should I take more challenging courses (e.g., enriched, college and AP courses) even if my overall GPA is lower?***

College admissions personnel continue to inform us that they would prefer a student attempts to challenge him or herself as much as possible even if that means receiving a lower grade in a more challenging curriculum. Keep in mind, that participation in enriched, college and AP courses at AHS allows students to boost their overall final average by .05% in each of the classes they have participated in.

***How many recommendations should I have for my college applications?***

At one time the standard answer was three. This now varies from college to college, so be sure to understand the specific requirements of each college. If they ask for only one that is what they want to receive. More is not necessarily better. Be sure to check if the college needs counselor letters and how many teacher letters.



# HELPFUL RESOURCES

## **College Search Engines:**

[www.connection.naviance.com/auburnhs](http://www.connection.naviance.com/auburnhs)

[www.collegeboard.com](http://www.collegeboard.com)

[www.collegeanswer.com](http://www.collegeanswer.com)

[www.princetonreview.com/college/research/advsearch/match.asp](http://www.princetonreview.com/college/research/advsearch/match.asp)

## **Assistance With Choosing a Major:**

[www.MyMajors.com](http://www.MyMajors.com)

[www.uncw.edu/career/whatcanidowithamajorin.html](http://www.uncw.edu/career/whatcanidowithamajorin.html)

## **Potential Sources of Financial Assistance for College:**

- State and local governments
- Businesses and employers
- Clubs and associations
- High schools and colleges
- Civic groups and religious organizations
- Trade associations and labor unions
- Political parties
- Military organizations
- Private foundations and charities
- Ethnic organizations

## **Financial Aid & Scholarship Resources:**

[www.fafsa.ed.gov](http://www.fafsa.ed.gov) - File for your FAFSA online

[www.finaid.org](http://www.finaid.org) - financial aid information

[www.nymentor.edu](http://www.nymentor.edu) - financial aid, college and career information

[www.nysaves.org](http://www.nysaves.org) - New York's College Savings Program

[www.hesc.com](http://www.hesc.com) - New York State Tuition Assistance application

[www.fastweb.com](http://www.fastweb.com) - scholarship information

[www.mappingyourfuture.org](http://www.mappingyourfuture.org) - online student loan counseling

[www.collegeanswer.com](http://www.collegeanswer.com) - college, scholarship and financial aid information

[www.princetonreview.com](http://www.princetonreview.com) - college and scholarship information

## **Student Athletes:**

[www.eligibilitycenter.org](http://www.eligibilitycenter.org) - Apply for NCAA eligibility online

\*\*Guide for Student Athletes - available in the Counseling Office



# Admissions Information Summary - 2014

For more information call our toll-free number at 800-342-3811 or visit us on the web at [www.suny.edu/attend](http://www.suny.edu/attend)

Campus Name (by campus type)	Undergraduate Enrollment	SAT Scores**ACT Scores		H.S. GPA	Early Decision (ED) or Early Action (EA)	Early Admission	EOP Program	English Language Options	Joint Admissions	Teaching Certificate	Honors Program	Time Shortened Degree	ROTC
		(combined) Score (subject minimum 200)	(composite) Score										
<b>University Centers and Doctoral Degree Granting Institutions</b>													
Albany	12,822	1100-1240	24-28	86-94	EA	Yes	Yes	Yes	Yes	Grad level	Yes	No	A*, AF*
Binghamton+	12,356	1190-1390 <sup>1</sup>	27-31	91-97	EA	Yes	Yes	Yes	Yes	Grad level	Yes	Yes	A*, AF*, M*
University at Buffalo**	19,831	1080-1260	24-29	90-96	ED	Yes	Yes	Yes	Yes	Grad level	Yes	No	A*
Stony Brook**	16,234	1190-1340	26-30	90-96	No	Yes	Yes	Yes	Yes	Yes	Yes	No	A*, AF*
NYS Ceramics at Alfred University+	610	1000-1220	21-27	82-91	ED	Yes	Yes	No	No	Yes*	Yes	No	A*
College of Optometry+	Graduate and Professional Degrees Only				No	No	No	No	No	No	No	No	
<b>Cornell University:</b>													
Agriculture & Life Sciences	3,390	1240-1440	28-32	--	ED	Yes	Yes	No	No	No	No	No	A, AF, M, N
Human Ecology	1,250	1310-1460	30-33	--	ED	Yes	Yes	No	No	Yes	Yes	No	A, AF, M, N
Veterinary Medicine	Graduate Level Only				--	ED	No	No	No	No	No	No	
Industrial & Labor Relations	905	1290-1430	29-32	--	ED	Yes	Yes	No	No	No	Yes	No	A, AF, M, N
Environmental Science & Forestry	1,700	1140-1260	26-29	89-94	ED	Yes	Yes	Yes*	No	Yes*	Yes	No	A*, AF*
Downstate Medical Center (Brooklyn)+	343	--	--	--	No	Yes	Yes	No	No	No	No	No	
Upstate Medical University (Syracuse)+	301	--	--	--	No	Yes	Yes	No	Yes	No	No	No	
<b>University Colleges</b>													
Brockport	7,184	970-1150	21-25	87-93	No	Yes	Yes	Yes	Yes	Yes	Yes	Yes	A, AF*, N*
Buffalo State	9,338	890-1030	20-24	82-89	No	Yes	Yes	Yes	Yes	Yes	Yes	No	A*
Cortland	6,350	1050-1160	23-26	88-94	EA	Yes	Yes	No	Yes	Yes	Yes	No	A*, AF*
Fredonia	5,103	1000-1150	22-26	85-92	ED	Yes	Yes	Yes	Yes	Yes	Yes	Yes	
Geneseo	4,950	1180-1340	26-29	90-96	ED	Yes	Yes	Yes	Yes	Yes	Yes	No	A*, AF*
New Paltz+	6,570	1080-1230	24-28	89-94	EA	Yes	Yes	Yes	Yes	Yes	Yes	Yes	
Old Westbury	4,368	980-1120	22-24	84-91	EA	Yes	Yes	No	Yes	Yes	Yes	Yes	A*, AF*
Oneonta	5,800	1060-1170	24-26	88-94	EA	Yes	Yes	Yes	No	Yes	No	Yes	
Oswego+	7,300	1050-1190	22-27	87-93	ED	Yes	Yes	Yes	Yes	Yes	Yes	No	A*, AF*
Plattsburgh	5,704	1000-1140	21-25	85-91	No	Yes	Yes	Yes	No	Yes	Yes	Yes	
Potsdam	3,707	--	--	87-91	No	Yes	Yes	Yes	Yes	Yes	Yes	No	A*, AF*
Purchase	4,493	1010-1150	20-26	85-90	EA	Yes	Yes	Yes	No	No	No	No	
Empire State College	18,656	--	--	--	No	No	No	No	No	Grad level	No	Yes	
<b>Colleges of Technology</b>													
Alfred State	3,549	860-1060	18-23	80-88	No	Yes	Yes	Yes	Yes	No	Yes	No	A*
Baccalaureate only	1,050	1030-1090	22-26	87-94									
Canton	3,780	820-1030	17-23	79-87	No	Yes	Yes	Yes	Yes	No	Yes	No	A*, AF*
Baccalaureate only	1,528	890-1070	19-24	82-90									
Cableskill	2,470	780-990	17-22	77-86	No	Yes	Yes	Yes	Yes	No	Yes	No	
Baccalaureate only	1,130	930-1100	21-24	84-90									
Delhi	3,375+	880-1100	16-21	76-85	No	Yes	Yes	Yes	Yes	No	Yes	No	
Baccalaureate only	1,458	980-1110	--	83-89									
Farmingdale State	8,162	970-1120	20-25	84-90	No	Yes	Yes	No	Yes	No	No	No	A*, AF*
Maritime College	1,600	1070-1150	20-24	85-92	ED	No	Yes	No	Yes	No	No	No	A*, AF*, CG*, M, N
Morrisville State	3,095	760-980	17-22	78-85	No	Yes	Yes	No	Yes	No	No	No	A*, AF*
Baccalaureate only	777	840-1030	17-21	80-88									
SUNYIT	2,000	1020-1190	25-27	87-92	EA	Yes	Yes	No	Yes	No	No	Yes	A*, AF*

Abbreviations: A = Army, AF = Air Force, CG = Coast Guard, M = Marines, N = Navy

\* Cross-registration offered at neighboring institutions

\*\* Enrollment includes Health Science Centers

\*\*\* The SAT ranges above represent combined critical reading and math scores (the maximum possible total is 1600). While most campuses base admissions decisions on math and critical reading sections of the SAT, prospective students should consult with campuses of interest to determine policies regarding the SAT writing score and for students taking the ACT, if the ACT writing component is required.

+ 2013 Data

<sup>1</sup> All three sections of the SAT are considered in admissions decisions.

25K

OVER »



# Division Sports at The State University of New York

## NCAA Division I

Albany  
Baseball (M)  
Basketball (M,W)  
Cross-Country (M,W)  
Field Hockey (W)  
Football (M)  
Golf (W)  
Lacrosse (M,W)  
Soccer (M,W)  
Softball (W)  
Tennis (W)  
Track (Indoor/Outdoor) (M,W)  
Volleyball (W)

Binghamton  
Baseball (M)  
Basketball (M,W)  
Cross-Country (M,W)  
Golf (M)  
Lacrosse (M,W)  
Soccer (M,W)  
Softball (W)  
Swimming/Diving (M,W)  
Tennis (M,W)  
Track & Field (Outdoor) (M,W)  
Volleyball (W)  
Wrestling (M)

University at Buffalo  
Baseball (M)  
Basketball (M,W)  
Cross-Country (M,W)  
Football (M)  
Rowing (W)  
Soccer (M,W)  
Softball (W)  
Swimming/Diving (M,W)  
Tennis (M,W)  
Track & Field (Indoor/Outdoor) (M,W)  
Volleyball (W)  
Wrestling (M)

Stony Brook  
Baseball (M)  
Basketball (M,W)  
Cross-Country (M,W)  
Football (M)  
Lacrosse (M,W)  
Soccer (M,W)  
Softball (W)  
Swimming/Diving (M,W)  
Tennis (M,W)  
Track & Field (Indoor/Outdoor) (M,W)  
Volleyball (W)

*NOTE: Purchase College participates in the Men's and Women's North Eastern Athletic Conferences.*

For more information on admissions criteria and campus life at SUNY colleges, search our Web site at [www.suny.edu/student](http://www.suny.edu/student)

## NCAA Division III

Alfred State  
Baseball (M)  
Basketball (M,W)  
Cross-Country (M,W)  
Football (M)  
Lacrosse (M)  
Soccer (M,W)  
Softball (W)  
Swimming (M,W)  
Track & Field (Indoor/Outdoor) (M,W)  
Volleyball (W)  
Wrestling (M)

Brackport  
Baseball (M)  
Basketball (M,W)  
Cross-Country (M,W)  
Field Hockey (W)  
Football (M)  
Gymnastics (W)  
Ice Hockey (M)  
Lacrosse (M,W)  
Soccer (M,W)  
Softball (W)  
Swimming/Diving (M,W)  
Tennis (W)  
Track & Field (Indoor/Outdoor) (M,W)  
Volleyball (W)  
Wrestling (M)

Buffalo State  
Basketball (M,W)  
Cross-Country (M,W)  
Football (M)  
Ice Hockey (M,W)  
Lacrosse (W)  
Soccer (M,W)  
Softball (W)  
Swimming/Diving (M,W)  
Track & Field (Indoor/Outdoor) (M,W)  
Volleyball (W)

Canton  
Baseball (M)  
Basketball (M,W)  
Cross-Country (M,W)  
Golf (M)  
Ice Hockey (M,W)  
Lacrosse (M,W)  
Soccer (M,W)  
Softball (W)  
Volleyball (W)

Cobleskill  
Basketball (M,W)  
Cross-Country (M,W)  
Equestrian Hunt Seat (M,W)  
Equestrian Western (M,W)  
Golf (M,W)  
Lacrosse (M)  
Soccer (M,W)  
Softball (W)  
Swimming/Diving (M,W)  
Track & Field (Indoor/Outdoor) (M,W)  
Volleyball (W)

Cortland  
Baseball (M)  
Basketball (M,W)  
Cross-Country (M,W)  
Field Hockey (W)  
Football (M)  
Golf (W)  
Gymnastics (W)  
Ice Hockey (M,W)

## Continued (continued)

Lacrosse (M,W)  
Soccer (M,W)  
Softball (W)  
Swimming/Diving (M,W)  
Tennis (W)  
Track & Field (Indoor/Outdoor) (M,W)  
Volleyball (W)  
Wrestling (M)

Farmingdale  
Baseball (M)  
Basketball (M,W)  
Cross-Country (M,W)  
Golf (M)  
Lacrosse (M,W)  
Soccer (M,W)  
Softball (W)  
Tennis (M,W)  
Track & Field (Indoor/Outdoor) (M,W)  
Volleyball (W)

Fredonia  
Baseball (M)  
Basketball (M,W)  
Cross-Country (M,W)  
Ice Hockey (M)  
Lacrosse (W)  
Soccer (M,W)  
Softball (W)  
Swimming/Diving (M,W)  
Tennis (W)  
Track & Field (Indoor/Outdoor) (M,W)  
Volleyball (W)

Geneseo  
Basketball (M,W)  
Cross-Country (M,W)  
Equestrian (W)  
Field Hockey (W)  
Ice Hockey (M)  
Lacrosse (M,W)  
Soccer (M,W)  
Softball (W)  
Swimming/Diving (M,W)  
Tennis (W)  
Track & Field (Indoor/Outdoor) (M,W)  
Volleyball (W)

Maritime  
Baseball (M)  
Basketball (M)  
Crew (M,W)  
Cross-Country (M,W)  
Football (M)  
Lacrosse (M,W)  
Rugby (M)  
Sailing (M,W)  
Soccer (M,W)  
Swimming (M,W)  
Volleyball (W)

Marriottsville  
Basketball (M,W)  
Cross-Country (M,W)  
Equestrian (M,W)  
Field Hockey (W)  
Football (M)  
Ice Hockey (M)  
Lacrosse (M,W)  
Soccer (M,W)  
Softball (W)  
Volleyball (W)

## New Paltz

Baseball (M)  
Basketball (M,W)  
Cross-Country (M,W)  
Field Hockey (W)  
Lacrosse (W)  
Soccer (M,W)  
Softball (W)  
Swimming (M,W)  
Tennis (W)  
Volleyball (M,W)

NYS Ceramics at Alfred University  
Basketball (M,W)  
Cross-Country (M,W)  
Equestrian (Co-ed)  
Football (M)  
Lacrosse (M,W)  
Skiing (M,W)  
Soccer (M,W)  
Softball (W)  
Swimming/Diving (M,W)  
Tennis (M,W)  
Track & Field (Indoor/Outdoor) (M,W)  
Volleyball (W)

Old Westbury  
Baseball (M)  
Basketball (M,W)  
Cross-Country (M,W)  
Golf (M)  
Lacrosse (W)  
Soccer (M,W)  
Softball (W)  
Swimming (M,W)  
Volleyball (W)

Oneonta  
Baseball (M)  
Basketball (M,W)  
Cross-Country (M,W)  
Field Hockey (W)  
Lacrosse (M,W)  
Soccer (M,W)  
Softball (W)  
Swimming/Diving (M,W)  
Tennis (M,W)  
Track & Field (Indoor/Outdoor) (M,W)  
Volleyball (W)  
Wrestling (M)

Oswego  
Baseball (M)  
Basketball (M,W)  
Cross-Country (M,W)  
Field Hockey (W)  
Golf (M)  
Ice Hockey (M,W)  
Lacrosse (M,W)  
Soccer (M,W)  
Softball (W)  
Swimming/Diving (M,W)  
Tennis (M,W)  
Track & Field (Indoor/Outdoor) (M,W)  
Volleyball (W)  
Wrestling (W)

## Potsdam

Baseball (M)  
Basketball (M,W)  
Cross-Country (M,W)  
Ice Hockey (M,W)  
Lacrosse (M)  
Soccer (M,W)  
Softball (W)  
Tennis (W)  
Track & Field (Indoor/Outdoor) (M,W)  
Volleyball (W)

Potsdam  
Basketball (M,W)  
Cross-Country (M,W)  
Equestrian (W)  
Golf (M)  
Ice Hockey (M,W)  
Lacrosse (M,W)  
Soccer (M,W)  
Softball (W)  
Swimming/Diving (M,W)  
Volleyball (W)

Purchase  
Baseball (M)  
Basketball (M,W)  
Cross-Country (M,W)  
Golf (M)  
Lacrosse (M,W)  
Soccer (M,W)  
Softball (W)  
Swimming & Diving (M,W)  
Tennis (M,W)  
Volleyball (M,W)

St. John's  
Baseball (M)  
Basketball (M,W)  
Cross-Country (M,W)  
Lacrosse (M,W)  
Soccer (M,W)  
Softball (W)  
Volleyball (M,W)

## NJCAA Division III

Delhi  
Basketball (M,W)  
Cross-Country (M,W)  
Golf (M,W) (NAIA)  
Lacrosse (M)  
Soccer (M,W)  
Softball (W)  
Swimming/Diving (M,W)  
Tennis (M,W)  
Track & Field (Indoor/Outdoor) (M,W)  
Volleyball (W)

## USCAA

Environmental Science and Forestry  
Basketball (M)  
Cross-Country (M,W)  
Golf (M,W)  
Soccer (M,W)



# Community College Admissions Information Summary - 2014

For more information call our toll-free number at 800-342-3811 or visit us on the web at [www.suny.edu/attend](http://www.suny.edu/attend)

Campus Name	Enrollment		Honors Program	Phi Theta Kappa	ASC Participating Campus	Student On-Campus	Housing Nearby	ACT or SAT Scores Used for Placement	English Study Options	Language Abroad	ROTC	Telephone Number	Web Address
	(full-time)	(part-time)											
Adirondack	2,588	1,799	No	Yes	Yes	✓**			No	Yes	No	518.743.2264	<a href="http://www.sunyacc.edu">www.sunyacc.edu</a>
Broome+	4,300	2,400	Yes	Yes	Yes	✓**			Yes	Yes	Yes*	607.778.5001	<a href="http://www.sunybroome.edu">www.sunybroome.edu</a>
Cayuga	2,252	2,571	Yes	Yes	Yes		✓***		No	Yes	No	866.598.8883	<a href="http://www.cayuga-cc.edu">www.cayuga-cc.edu</a>
Clinton	1,085	397	Yes	Yes	Yes	✓**		Yes	No	No	Yes	518.562.4170	<a href="http://www.clinton.edu">www.clinton.edu</a>
Columbia-Greene	964	1,154	Yes	Yes	Yes		✓	Yes	No	No	No	518.828.4181	<a href="http://www.mycommunitycollege.com">www.mycommunitycollege.com</a>
Corning+	2,468	2,833	Yes	Yes	Yes	✓	✓		No	Yes	No	607.962.9151	<a href="http://www.corning-cc.edu">www.corning-cc.edu</a>
Dutchess+	4,898	5,323	Yes	Yes	Yes	✓**	✓		Yes	Yes	Yes	845.431.8010	<a href="http://www.sunydutchess.edu">www.sunydutchess.edu</a>
Erie+	9,193	4,797	Yes	Yes	Yes		✓		Yes	No	Yes	716.851.ECC	<a href="http://www.ecc.edu">www.ecc.edu</a>
FIT+	7,257	2,309	Yes	Yes	Yes	✓**			Yes	Yes	Yes	800.GOTOFIT	<a href="http://www.fitnyc.edu">www.fitnyc.edu</a>
Finger Lakes	3,404	2,985	Yes	Yes	Yes	✓	✓		Yes	Yes	Yes	585.785.1278	<a href="http://www.flcc.edu">www.flcc.edu</a>
Fulton-Montgomery	1,724	1,057	Yes	Yes	Yes	✓**	✓		Yes	Yes	Yes	518.736.FMCC	<a href="http://www.fmcc.edu">www.fmcc.edu</a>
Genesee	3,320	3,640	Yes	Yes	Yes	✓**		Yes (ACT only)	Yes	Yes	Yes	585.345.6800	<a href="http://www.genesee.edu">www.genesee.edu</a>
Herkimer+	2,316	1,191	Yes	Yes	Yes	✓**	✓***		No	No	Yes	315.866.0300	<a href="http://www.herkimer.edu">www.herkimer.edu</a>
Hudson Valley	6,839	6,043	Yes	Yes	Yes		✓		Yes	Yes	Yes	518.629.7309	<a href="http://www.hvcc.edu">www.hvcc.edu</a>
Jamestown	2,764	2,414	Yes	Yes	Yes	✓	✓		No	Yes	Yes	800.388.8557	<a href="http://www.sunyjcc.edu">www.sunyjcc.edu</a>
Jefferson	2,249	1,808	Yes	Yes	Yes	✓**	✓		No	No	Yes	315.786.2277	<a href="http://www.sunyjefferson.edu">www.sunyjefferson.edu</a>
Mohawk Valley	4,616	2,817	Yes	Yes	Yes	✓**		Yes	No	Yes	Yes	315.792.5354	<a href="http://www.mvcc.edu">www.mvcc.edu</a>
Monroe	10,260	6,198	Yes	Yes	Yes	✓	✓	Yes	Yes	No	Yes	585.292.2200	<a href="http://www.monroec.edu">www.monroec.edu</a>
Nassau+	14,294	8,780	Yes	Yes	No				No	Yes	Yes	516.572.7345	<a href="http://www.ncc.edu">www.ncc.edu</a>
Niagara	4,164	2,484	Yes	Yes	Yes	✓	✓		No	Yes	Yes	716.614.6200	<a href="http://www.niagaracc.suny.edu">www.niagaracc.suny.edu</a>
North Country	1,541	1,018	No	Yes	Yes	✓**	✓		No	Yes	No	888.879.6222	<a href="http://www.nccc.edu">www.nccc.edu</a>
Onondaga+	6,540	6,294	Yes	Yes	Yes	✓**	✓	Yes	Yes	Yes	Yes	315.498.2000	<a href="http://www.sunyocc.edu">www.sunyocc.edu</a>
Orange+	3,322	2,840	Yes	Yes	Yes		✓		No	No	Yes	845.341.4030	<a href="http://www.sunyorange.edu">www.sunyorange.edu</a>
Rockland+	4,709	3,470	Yes	Yes	No		✓		No	Yes	Yes	800.722.7666	<a href="http://www.sunyrockland.edu">www.sunyrockland.edu</a>
Schenectady	2,729	3,843	Yes	Yes	Yes	✓***			Yes	Yes	Yes	518.381.1366	<a href="http://www.sunysccc.edu">www.sunysccc.edu</a>
Suffolk+	14,839	11,380	Yes	Yes	No			Yes	Yes	Yes	Yes	631.451.4000	<a href="http://www.sunysuffolk.edu">www.sunysuffolk.edu</a>
Sullivan+	1,051	706	Yes	Yes	Yes	✓**		Yes	No	No	No	800.577.5243	<a href="http://www.sunysullivan.edu">www.sunysullivan.edu</a>
Tompkins Cortland	2,482	821	Yes	Yes	Yes	✓**		No	No	Yes	Yes	607.844.6580	<a href="http://www.tc3.edu">www.tc3.edu</a>
Ulster+	1,567	2,135	Yes	Yes	Yes				Yes	Yes	Yes	800.724.0833	<a href="http://www.sunyulster.edu">www.sunyulster.edu</a>
Westchester+	7,640	6,141	Yes	Yes	No			Yes (Math only)	Yes	Yes	Yes	914.606.6735	<a href="http://www.sunywcc.edu">www.sunywcc.edu</a>

\* With neighboring institutions  
 \*\* Run by Campus Foundations or Dormitory Corporations  
 \*\*\* Privately owned for college students only  
 + 2013 Data

35K

OVER »